

Appendix 7: Maps showing changes to Wellington Urban FMU and Te Whanganui-a-Tara Harbours and estuaries Coastal Water Management Unit

This appendix includes amendments to Maps 79 and 83 in regard to the boundary between the freshwater management units and the coastal water management units.

Figures 1 to 3 provide a more detailed map of areas that might be of interest to the submitter

Figure 1: Seaview area and Te Awa Kairangi River mouth



Figure 2: CentrePort and Lambton Harbour

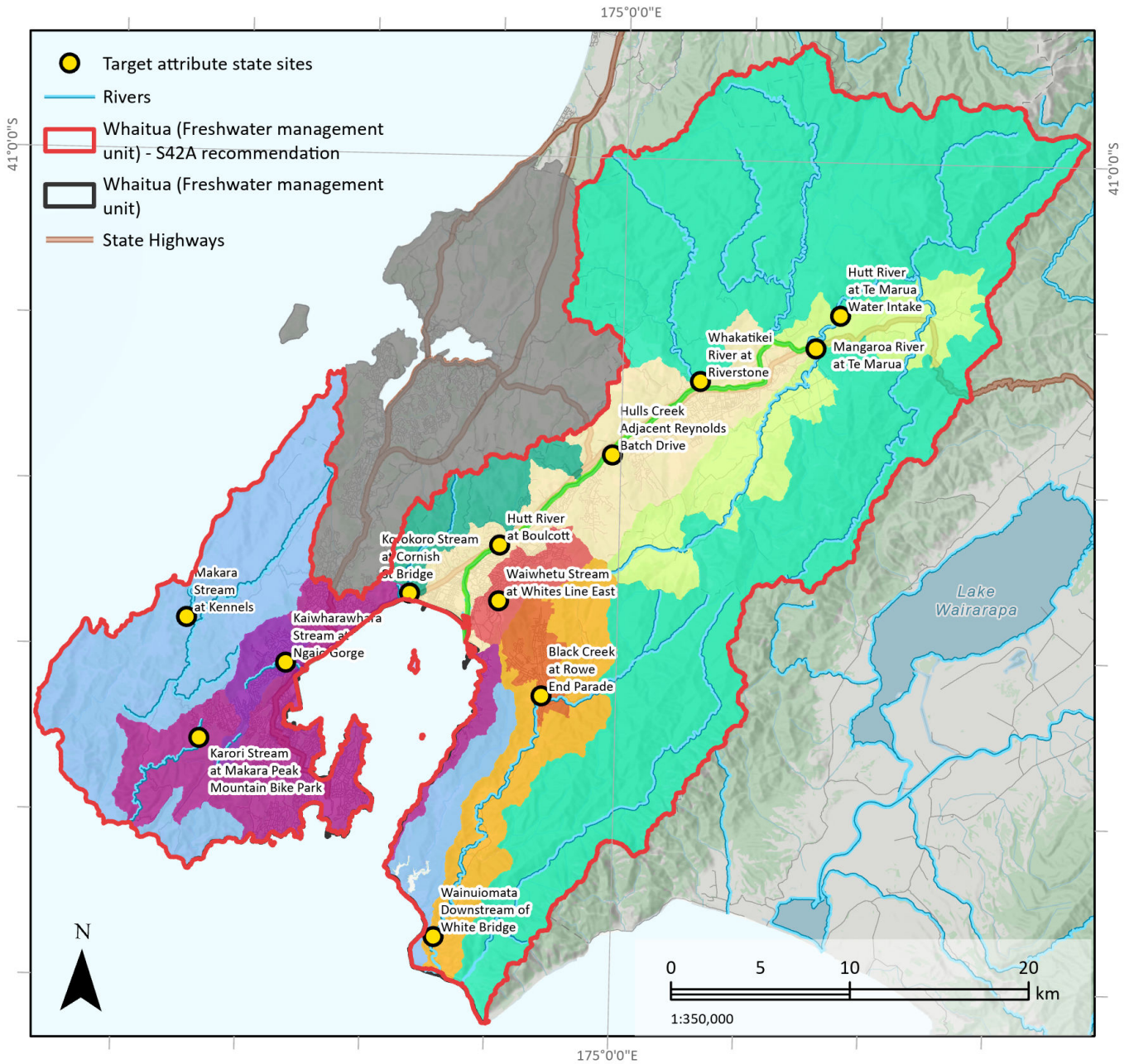


Figure 3: Evans Bay

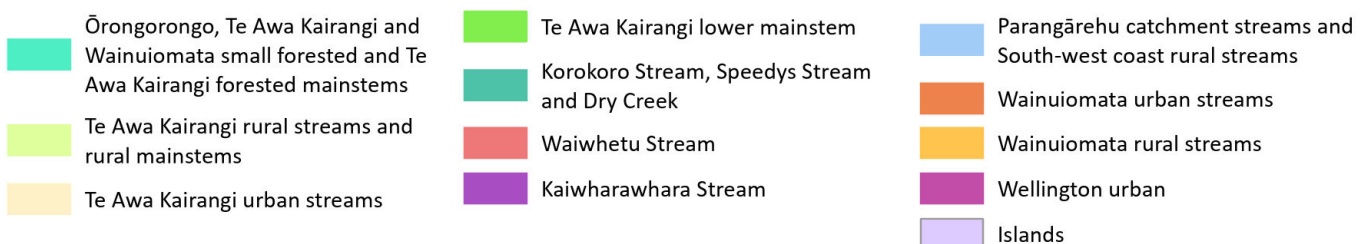


S42A recommendation: Part freshwater management units and target attribute state sites (rivers) - Whaitua Te Whanganui-a-Tara

Map 79



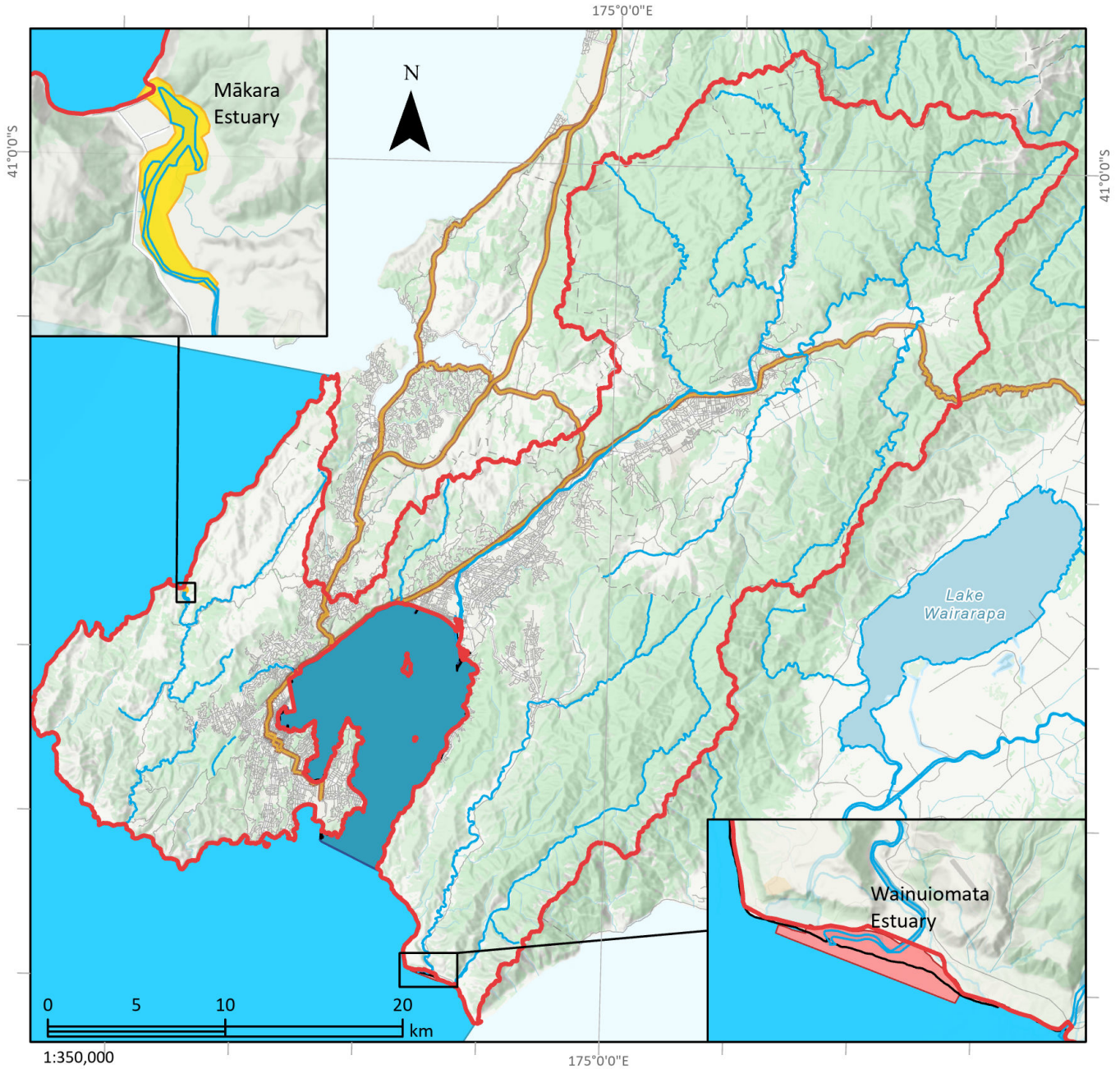
Part freshwater management units



This version of the map is not complete. The version of this map available online through the online web map viewer shows the complete, detailed information on a GIS overlay that is not shown on this hard copy. The online version is available on the Council's website at <https://experience.arcgis.com/experience/8ca4cb5241604ee0a981935b9be3fd4c/page/Natural-Resources-Plan/and> and can be accessed from the Council offices or public library. **Please not that the online map does not include section 42A recommendations.**

S42A recommendation: Coastal water management units Whaitua Te Whanganui-a-Tara

Map 83



- Coastal water management units**
- Whaitua (Freshwater management unit) - S42A recommendation
 - Whaitua (Freshwater management unit)
 - Rivers and streams in Te Whanganui-a-Tara
 - State Highways
 - Mākara Estuary
 - Te Whanganui-a-Tara harbour and estuaries
 - Wainuiomata Estuary
 - Wai Tai

This version of the map is not complete. The version of this map available online through the online web map viewer shows the complete, detailed information on a GIS overlay that is not shown on this hard copy. The online version is available on the Council's website at <https://experience.arcgis.com/experience/8ca4cb5241604ee0a981935b9be3fd4c/page/Natural-Resources-Plan/> and can be accessed from the Council offices or public library. **Please not that the online map does not include section 42A recommendations.**