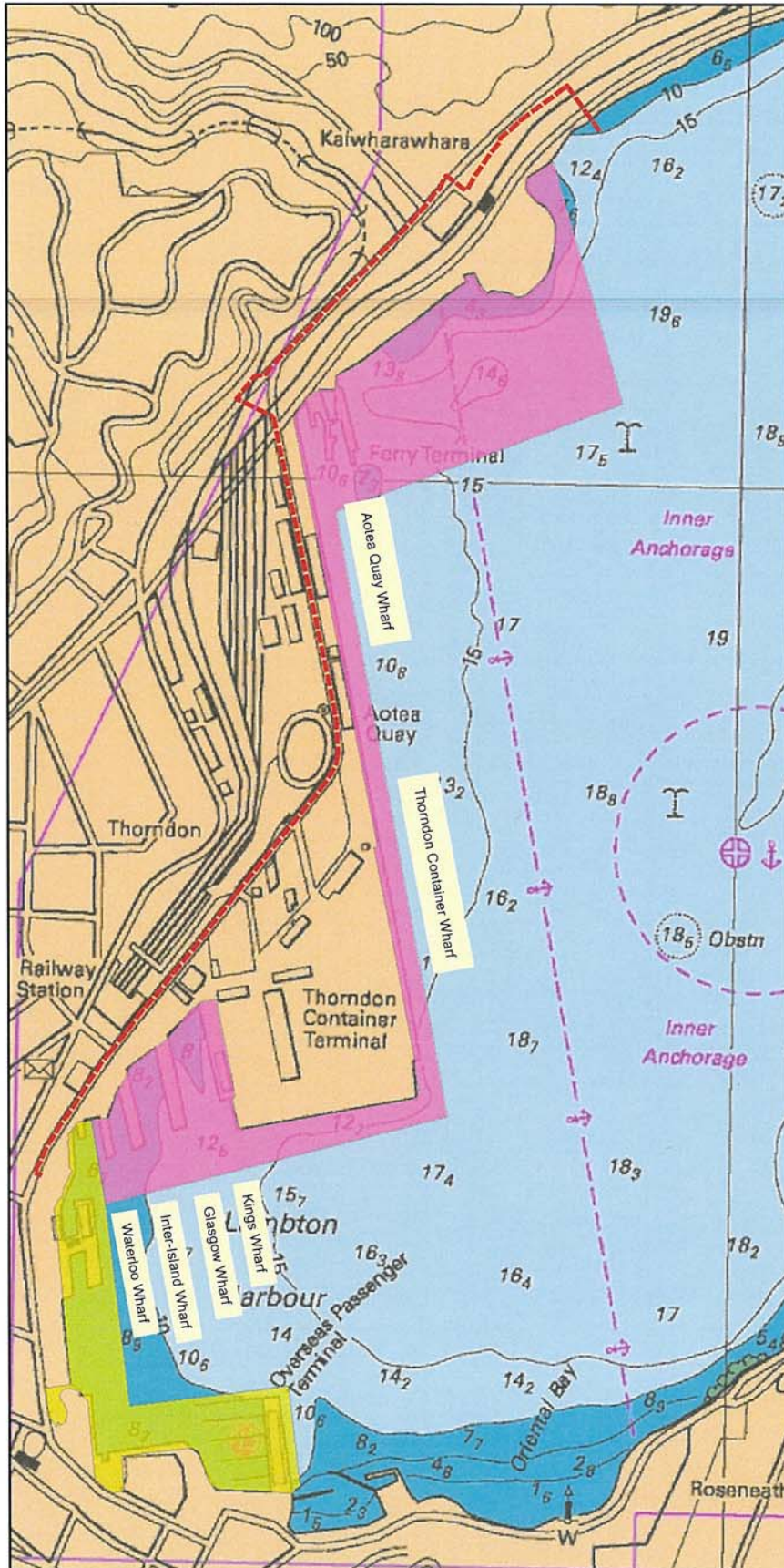


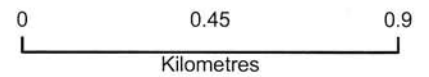
Lambton Harbour Development and Commercial Port Areas

Lambton Harbour



Legend

- - - Port noise control line
- Commercial port area (within the CMA)
- Lambton Harbour development area (within the CMA)



Note :

Shoreline details may not be accurate at this scale. All distances in metres.

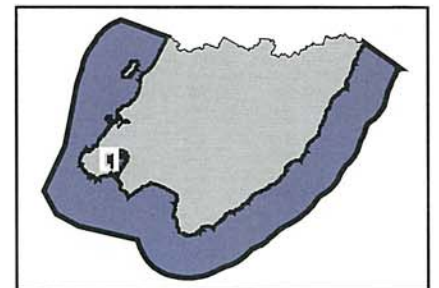
The landward boundary of the coastal marine area is the line of mean high water springs.

CAUTION

NOT TO BE USED FOR NAVIGATION

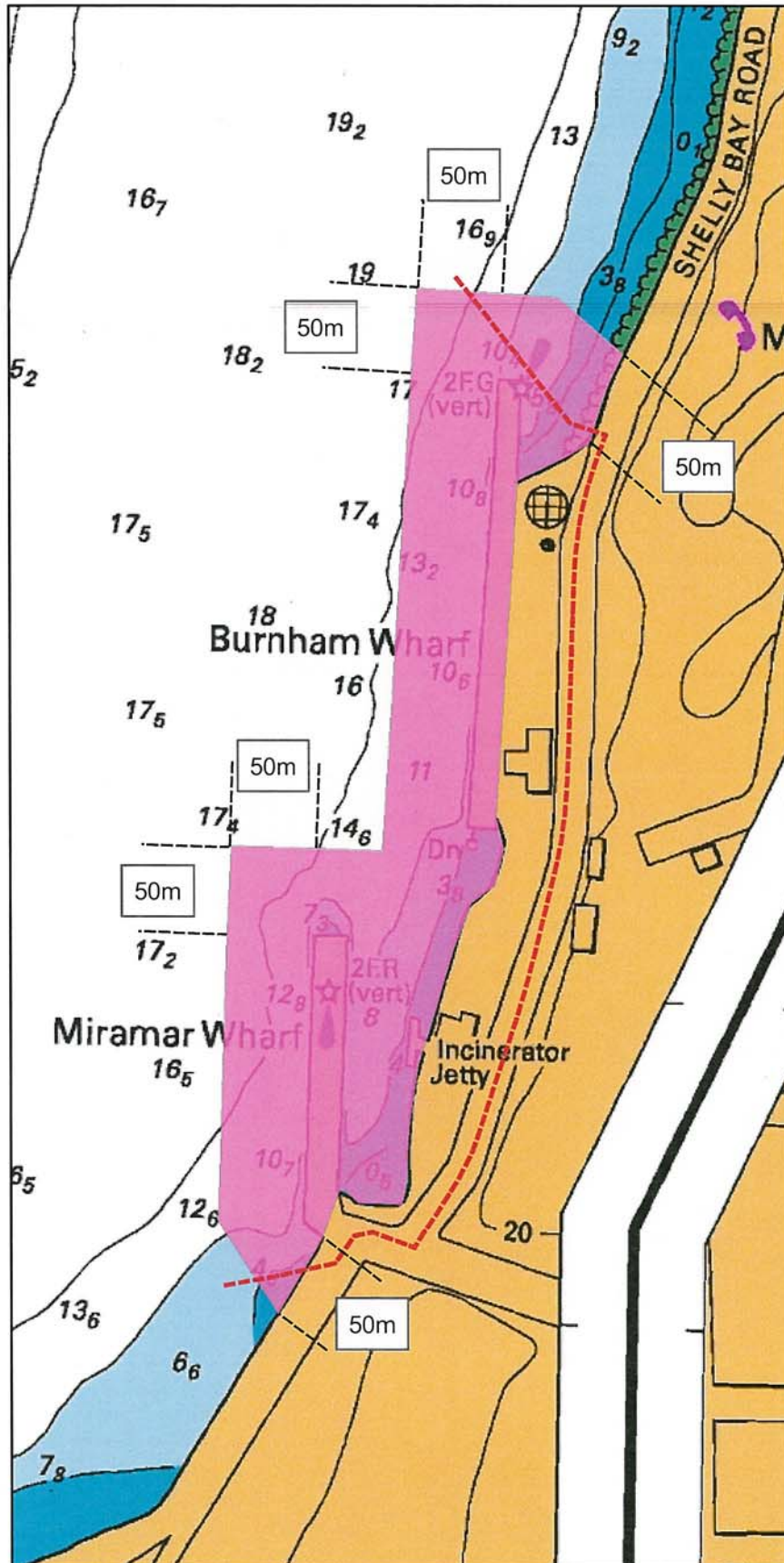
Part of Chart NZ 4633 Wellington Harbour reproduced by permission of Land Information New Zealand.

Locality Map



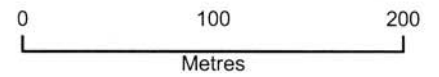
Commercial Port Areas

Miramar and Burnham Wharves



Legend

- - - Port noise control line
- Commercial port area (within the CMA)



Note :

Shoreline details may not be accurate at this scale. All distances in metres.

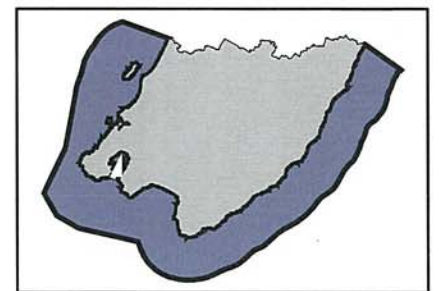
The landward boundary of the coastal marine area is the line of mean high water springs.

CAUTION

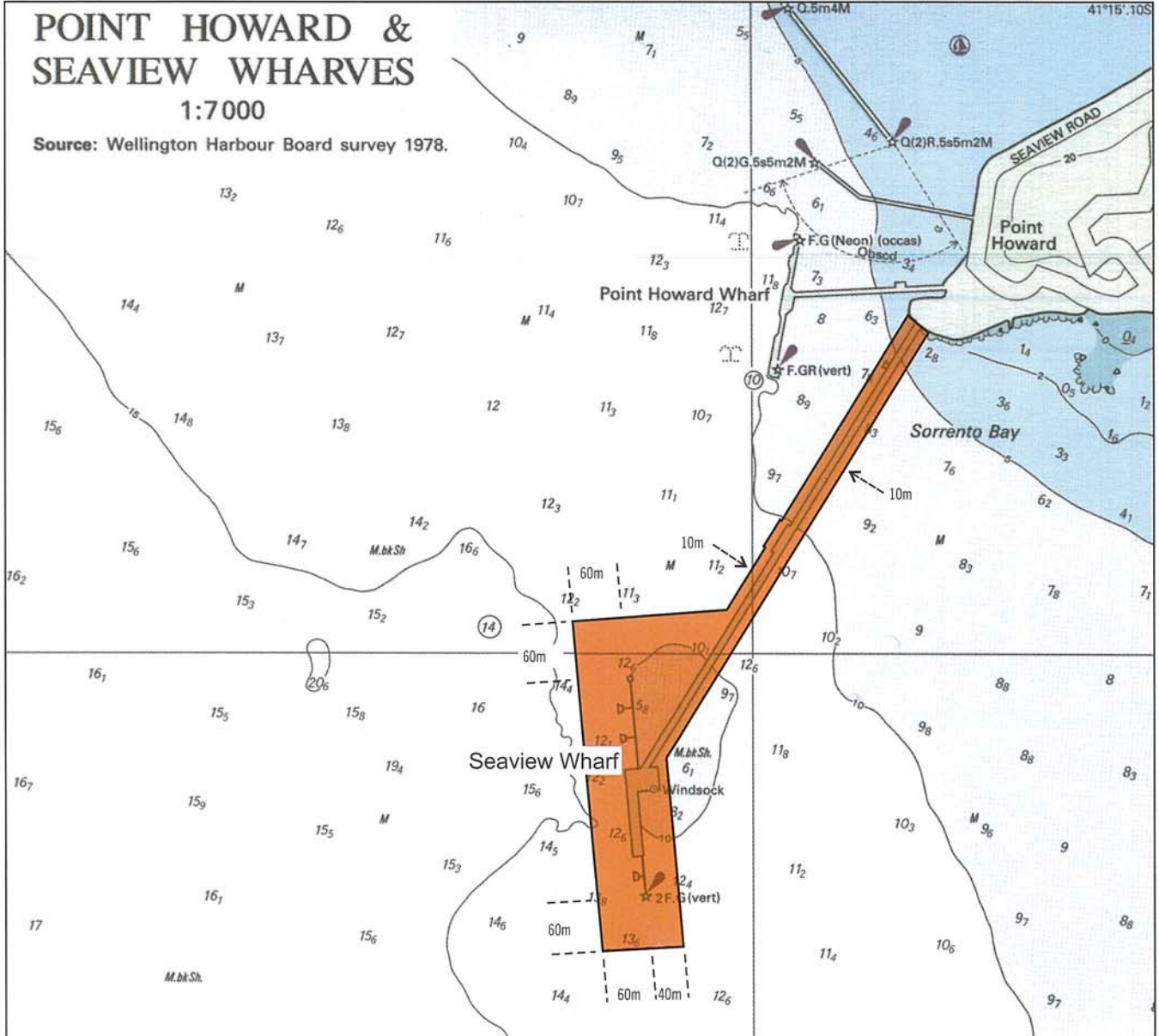
NOT TO BE USED FOR NAVIGATION

Part of Chart NZ 4634 Wellington Harbour reproduced by permission of Land Information New Zealand.

Locality Map



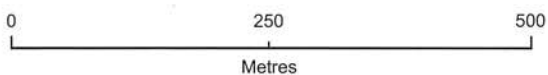
Commercial Port Area Seaview Wharf



Legend

 Commercial port area

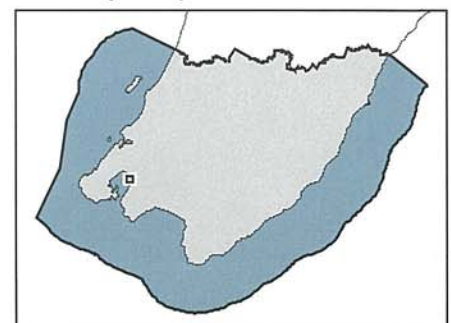
Note: Shoreline details may not be accurate at this scale
All distances in metres



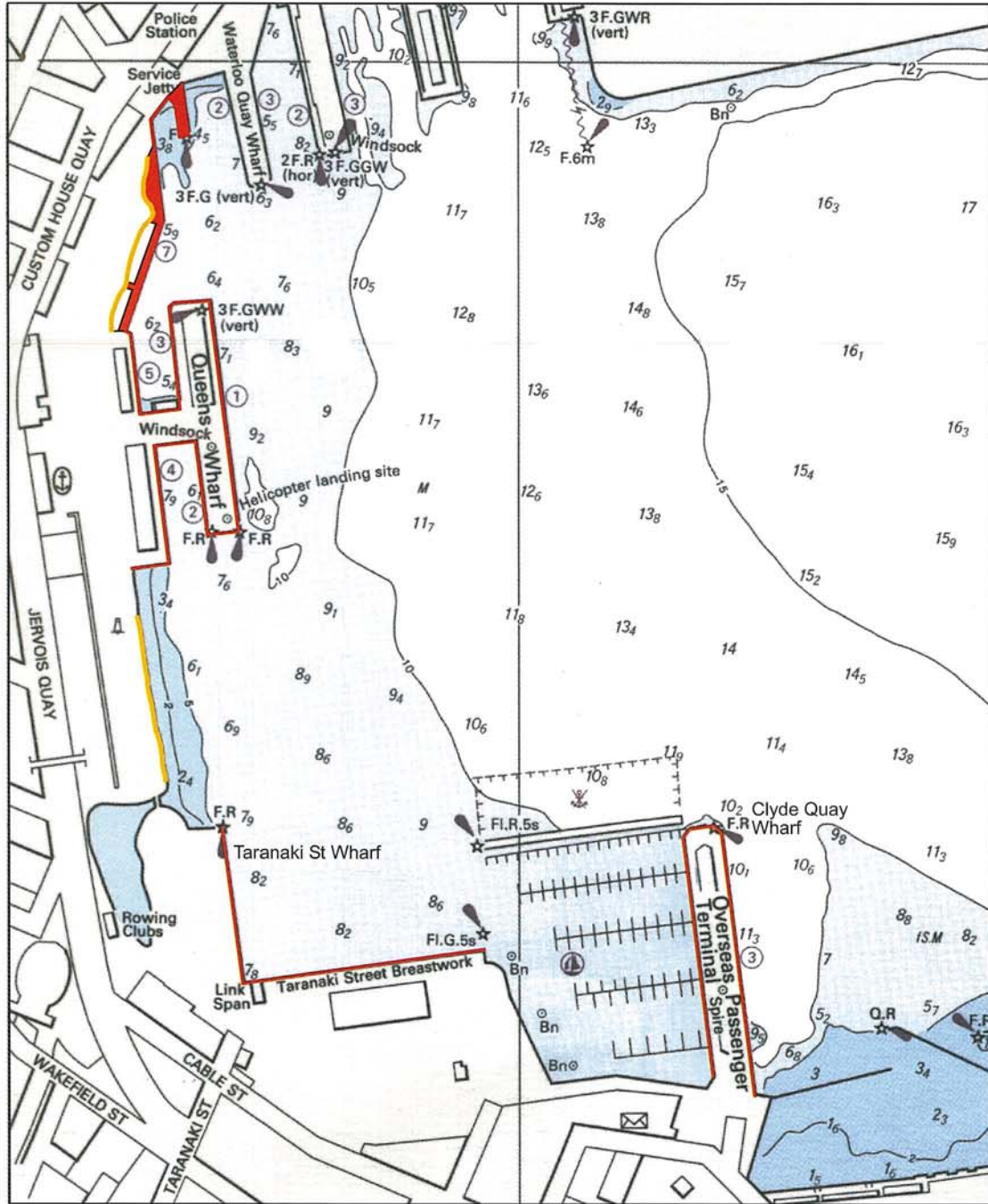
**CAUTION
NOT TO BE
USED FOR
NAVIGATION**



Locality Map



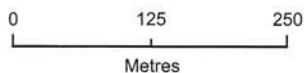
Protected Wharf and Reclamation Lambton Harbour Development Area



Legend

- Protected wharf and wharf edge
- Protected reclamation edge

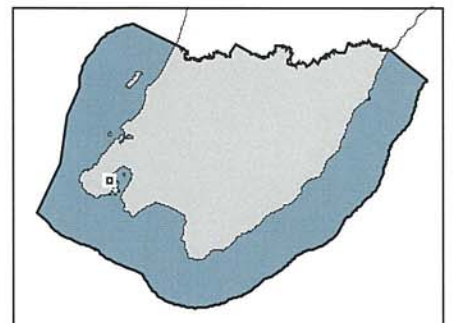
The landward boundary of the coastal marine area is the line of mean high water springs.



CAUTION
NOT TO BE
USED FOR
NAVIGATION



Locality Map






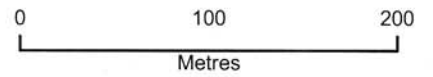
Lambton Harbour Development and Commercial Port Areas

Main Port - Southern Area



Legend

-  Port noise control line
-  Commercial port area (within the CMA)
-  Lambton Harbour Development Area north of Johnston St (within the CMA)



Note :

Shoreline details may not be accurate at this scale. All distances in metres.

The landward boundary of the coastal marine area is the line of mean high water springs.

CAUTION

NOT TO BE USED FOR NAVIGATION

Aerial photography reproduced by permission of WCC.

Locality Map

