

2023/24 Te Awarua-o-Porirua Harbour catchment sediment monitoring



Contents

- [2023/24 Te Awarua-o-Porirua Harbour catchment sediment monitoring](#)
 - [Contents](#)
 - [Disclaimer](#)
 - [Overview](#)
 - [Monitoring network](#)
 - [Porirua Stream at Town Centre results](#)
 - [Horokiri Stream at Snodgrass results](#)
 - [Pāuatahanui Stream at Gorge results](#)
-

Disclaimer

This report has been prepared by the Environment Group of Greater Wellington (GW) and as such does not constitute Council policy.

In preparing this report, the authors have used the best currently available data and have exercised all reasonable skill and care in presenting and interpreting these data. Nevertheless, GW does not accept any liability, whether direct, indirect, or consequential, arising out of the provision of the data and associated information within this report. Furthermore, as GW endeavours to continuously improve data quality, amendments to data included in, or used in the preparation of, this report may occur without notice at any time.

GW requests that if excerpts or inferences are drawn from this report for further use, due care should be taken to ensure the appropriate context is preserved and is accurately reflected and referenced in subsequent written or verbal communications. Any use of the data and information enclosed in this report, for example, by inclusion in a subsequent report or media release, should be accompanied by an acknowledgement of the source.

For the latest available results go to the [GW environmental data hub](#). Reports for previous years can be found in the [GW document library](#).

Overview

Continuous sediment monitoring sites were set up in the lower reaches of the three main tributaries of Te Awarua-o-Porirua Harbour (Porirua Harbour) in 2012/13. The purpose was to quantify the annual and event-based sediment loads to Porirua Harbour, recognising that excessive sediment deposition in the harbour is one of the key issues for estuarine health. These data summarise monitoring results for the period from July 2023 to June 2024.

Monitoring network

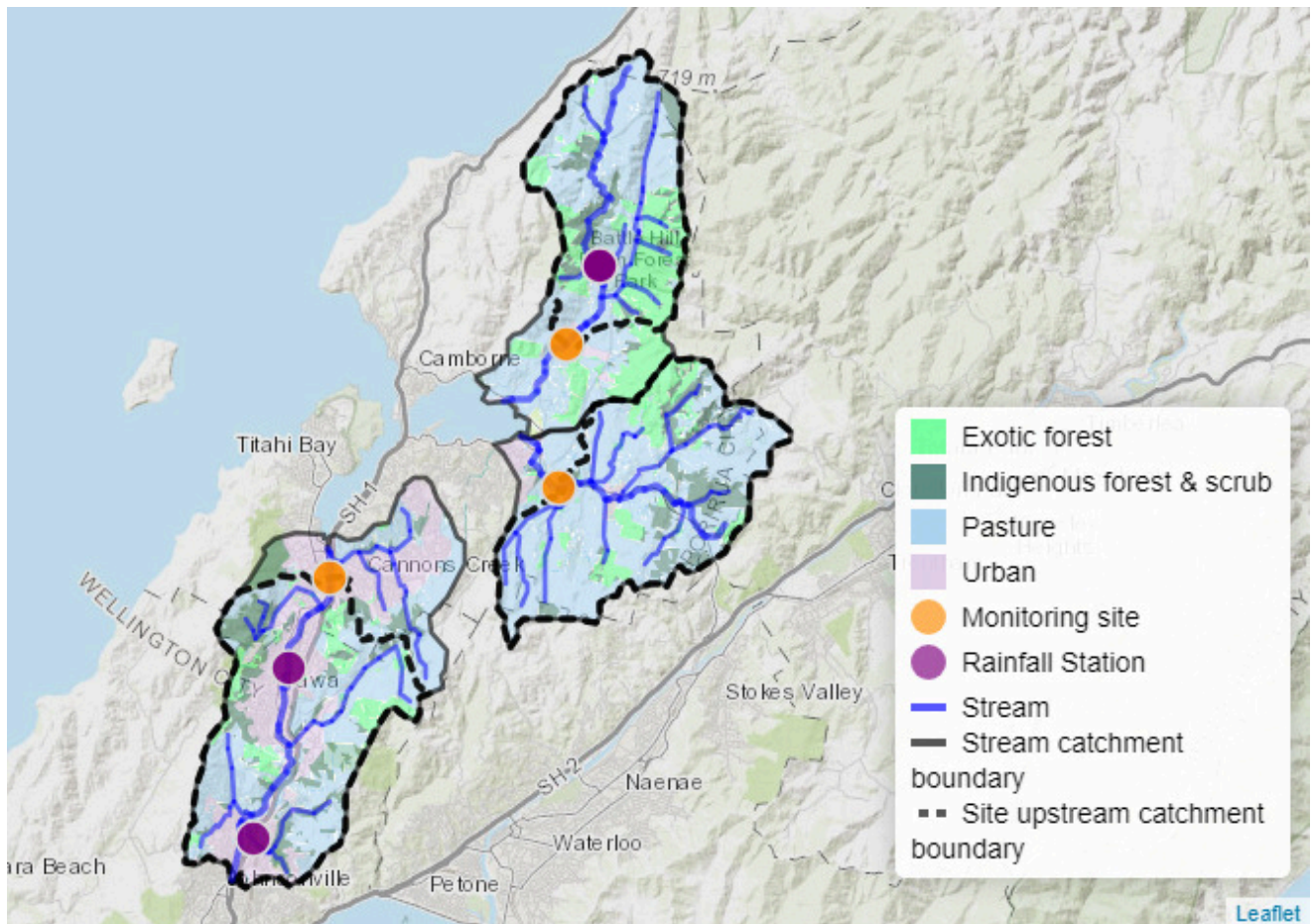


Figure 1: Sediment monitoring sites, rainfall gauges, and landcover classifications for the three main catchments of Te Awarua-o-Porirua harbour. On the map, these catchments are Horokiri Stream in the north, Porirua Stream to the southwest, and Pāuatahanui Stream in the central/eastern region.

The photos below show some of the equipment and surroundings of each monitoring site. For more details on site set up, instrumentation, data collection and processing, plus how sediment loads and yields are calculated, please refer to [Morar & Alberto \(2018\)](#).

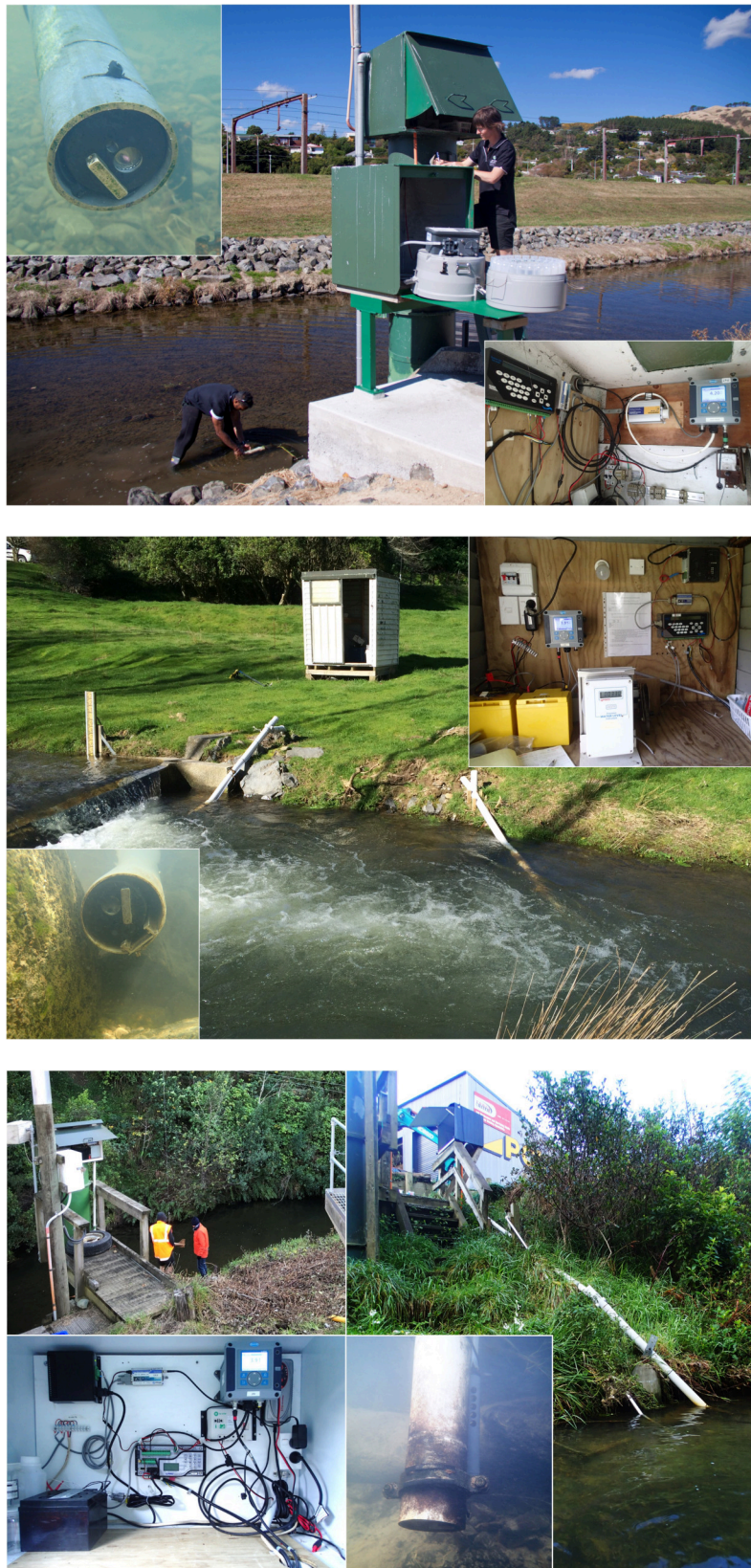


Figure 2: Monitoring sites from top to bottom: Porirua Stream at Town Centre, Horokiri Stream at Snodgrass, and Pāuatahanui Stream at Gorge.

Porirua Stream at Town Centre results

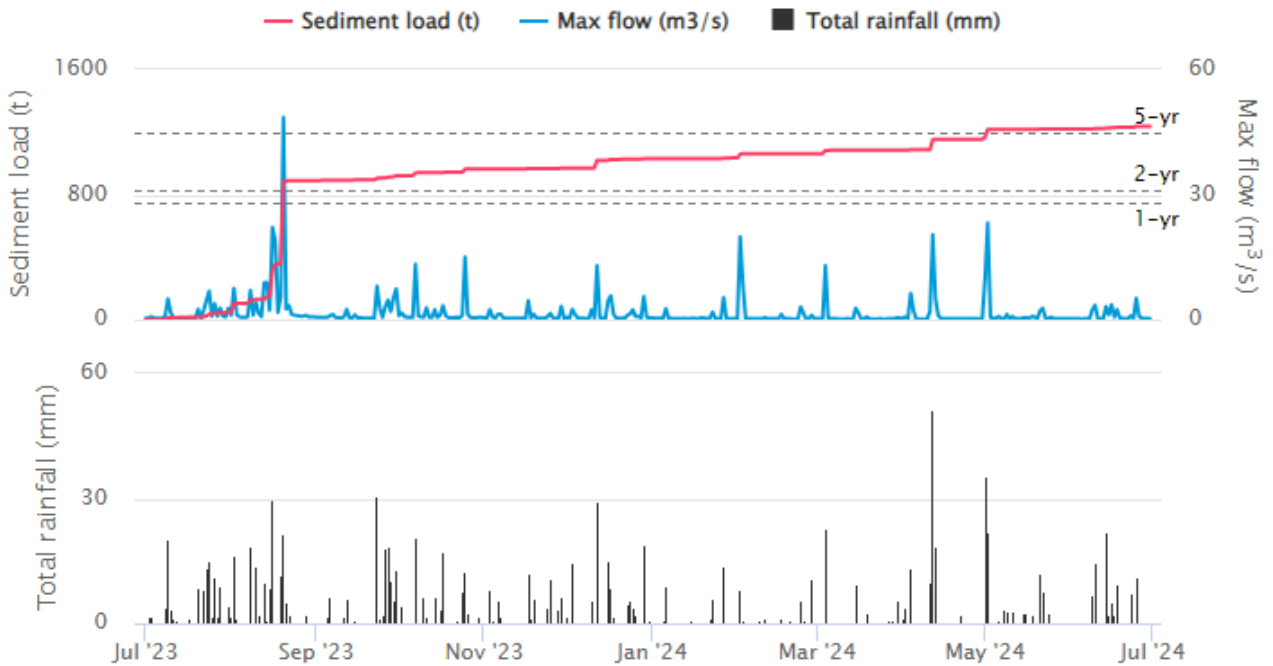


Figure 3: Porirua Stream at Town Centre cumulative sediment load, daily maximum flow and daily total rainfall for the 2023/24 monitoring season. Sediment load is predicted using a turbidity vs discrete suspended sediment concentration model that is updated annually, see [Morar & Alberto \(2018\)](#) for more information. **Note:** when there are gaps in the sediment load predictions, the resulting cumulative and annual sediment load totals may be underreported. The dashed flow event lines represent the flow level at which we would expect n years before another event that size (e.g. 1-yr suggests a flow event that size occurs on average once every year).

Table 1: Porirua Stream at Town Centre sediment yields/loads of key events during the 2023/24 monitoring year.

Event	Duration	Sediment load (t)	Sediment yield (t/ha)	Max flow (m ³ /s)	Flow return period (years)
16-08-2023 - 18-08-2023	2d 23h	206	0.05	22.1	<1
20-08-2023 - 20-08-2023	1d 21h	525	0.13	48.6	5
02-02-2024 - 03-02-2024	1d 14h	24	0.01	19.8	<1
12-04-2024 - 13-04-2024	1d 18h	61	0.02	20.4	<1
01-05-2024 - 03-05-2024	1d 7h	63	0.02	23.2	<1

Table 2: Porirua Stream at Town Centre annual total yields/loads per calendar year since monitoring began.

Year	Time	Sediment load (t) ¹	Sediment yield (t/ha/yr)
2012	122 days 22 hrs	309	0.08
2013	362 days 8 hrs	2,396	0.61
2014	361 days 15 hrs	1,204	0.31
2015	357 days 21 hrs	7,273	1.85
2016	360 days 11 hrs	6,957	1.77
2017	352 days 1 hr	3,806	0.97
2018	356 days 18 hrs	3,132	0.80
2019	360 days 17 hrs	2,463	0.63
2020	365 days 22 hrs	3,985	1.01
2021	195 days 12 hrs	2,117	0.54
2023	295 days 7 hrs	1,804	0.46
2024	181 days	208	0.05
Total	3,676 days 10 hrs	35,654	9.06

1: Annual sediment loads published in reports prior to 2022/23 will vary from what is published for the current report due to updates in the load calculation. Annual loads published in the current report are the most up-to-date.

Horokiri Stream at Snodgrass results

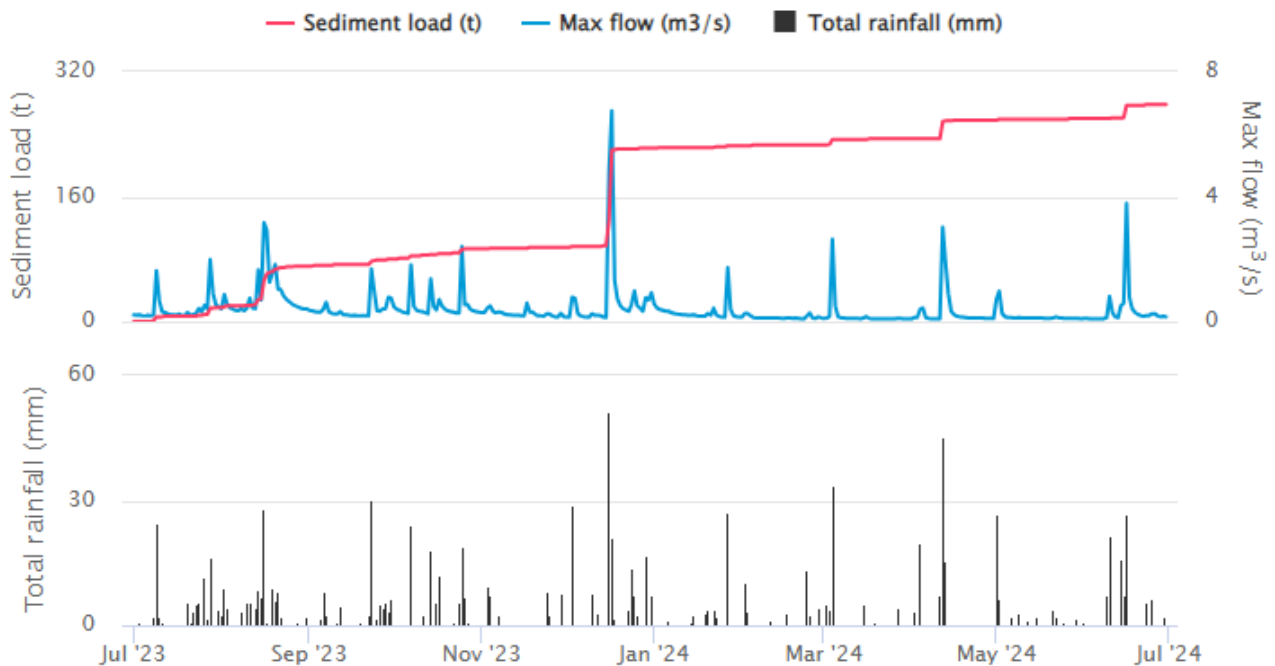


Figure 4: Horokiri Stream at Snodgrass cumulative sediment load, daily maximum flow and daily total rainfall for the 2023/24 monitoring season. Sediment load is predicted using a turbidity vs discrete suspended sediment concentration model that is updated annually, see [Morar & Alberto \(2018\)](#) for more information. **Note:** when there are gaps in the sediment load predictions, the resulting cumulative and annual sediment load totals may be underreported. The dashed flow event lines represent the flow level at which we would expect n years before another event that size (e.g. 1-yr suggests a flow event that size occurs on average once every year).

Table 3: Horokiri Stream at Snodgrass sediment yields/loads of key events during the 2023/24 monitoring year.

Event	Duration	Sediment load (t)	Sediment yield (t/ha)	Max flow (m ³ /s)	Flow return period (years)
16-12-2023 - 19-12-2023	3d 23h	124	0.04	6.8	<1

Table 4: Horokiri Stream at Snodgrass annual total yields/loads per calendar year since monitoring began.

Year	Time	Sediment load (t) ¹	Sediment yield (t/ha/yr)
2012	43 days 5 hrs	40	0.01
2013	355 days 6 hrs	2,673	0.93
2014	360 days 3 hrs	879	0.31
2015	361 days 7 hrs	4,709	1.64
2016	351 days 19 hrs	5,340	1.86
2017	339 days 6 hrs	1,752	0.61
2018	364 days 14 hrs	1,471	0.51
2019	362 days 2 hrs	1,173	0.41
2020	358 days 4 hrs	1,505	0.52
2021	323 days 12 hrs	3,911	1.36
2022	298 days 14 hrs	2,160	0.75
2023	355 days 22 hrs	493	0.17
2024	181 days 22 hrs	55	0.02
Total	4,062 days 16 hrs	26,163	9.11

1: Annual sediment loads published in reports prior to 2022/23 will vary from what is published for the current report due to updates in the load calculation. Annual loads published in the current report are the most up-to-date.

Pāuatahanui Stream at Gorge results

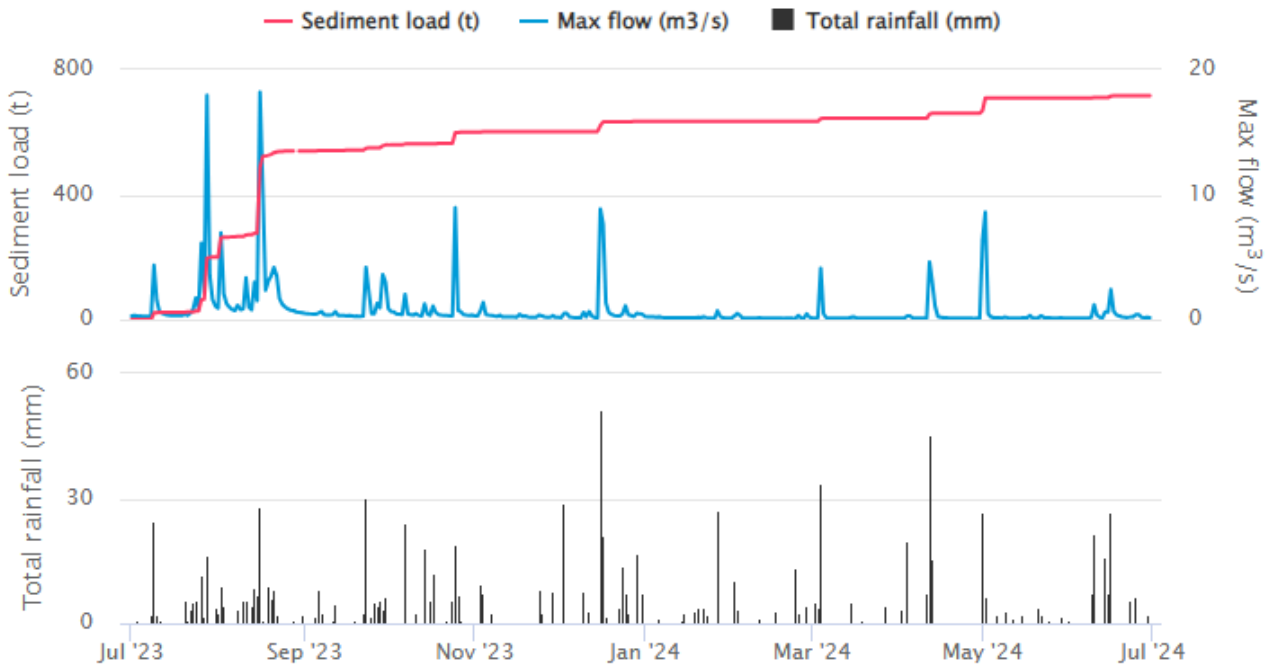


Figure 5: Pāuatahanui Stream at Gorge cumulative sediment load, daily maximum flow and daily total rainfall for the 2023/24 monitoring season. Sediment load is predicted using a turbidity vs discrete suspended sediment concentration model that is updated annually, see [Morar & Alberto \(2018\)](#) for more information. **Note:** when there are gaps in the sediment load predictions, the resulting cumulative and annual sediment load totals may be underreported. The dashed flow event lines represent the flow level at which we would expect n years before another event that size (e.g. 1-yr suggests a flow event that size occurs on average once every year).

Table 5: Pāuatahanui Stream at Gorge sediment yields/loads of key events during the 2023/24 monitoring year.

Event	Duration	Sediment load (t)	Sediment yield (t/ha)	Max flow (m ³ /s)	Flow return period (years)
28-07-2023 - 30-07-2023	3d 16h	134	0.04	18.0	<1
16-08-2023 - 18-08-2023	3d 15h	247	0.07	18.2	<1

Table 6: Pāuatahanui Stream at Gorge annual total yields/loads per calendar year since monitoring began.

Year	Time	Sediment load (t) ¹	Sediment yield (t/ha/yr)
2013	188 days 20 hrs	2,141	0.57
2014	360 days 10 hrs	744	0.20
2015	358 days 14 hrs	3,816	1.01
2016	363 days 21 hrs	9,563	2.54
2017	360 days 1 hr	1,779	0.47
2018	359 days 13 hrs	2,051	0.54
2019	363 days 8 hrs	3,705	0.98
2020	364 days 23 hrs	1,936	0.51
2021	348 days 9 hrs	2,876	0.76
2022	349 days 7 hrs	2,575	0.68
2023	362 days 20 hrs	1,025	0.27
2024	174 days 7 hrs	82	0.02
Total	3,959 days 9 hrs	32,295	8.58

1: Annual sediment loads published in reports prior to 2023/24 may vary from what is published for the current report due to updates in the load calculation. Annual loads published in the current report are the most up-to-date.