

## Appendix 2: Collaborative Modelling Project (CMP) working group

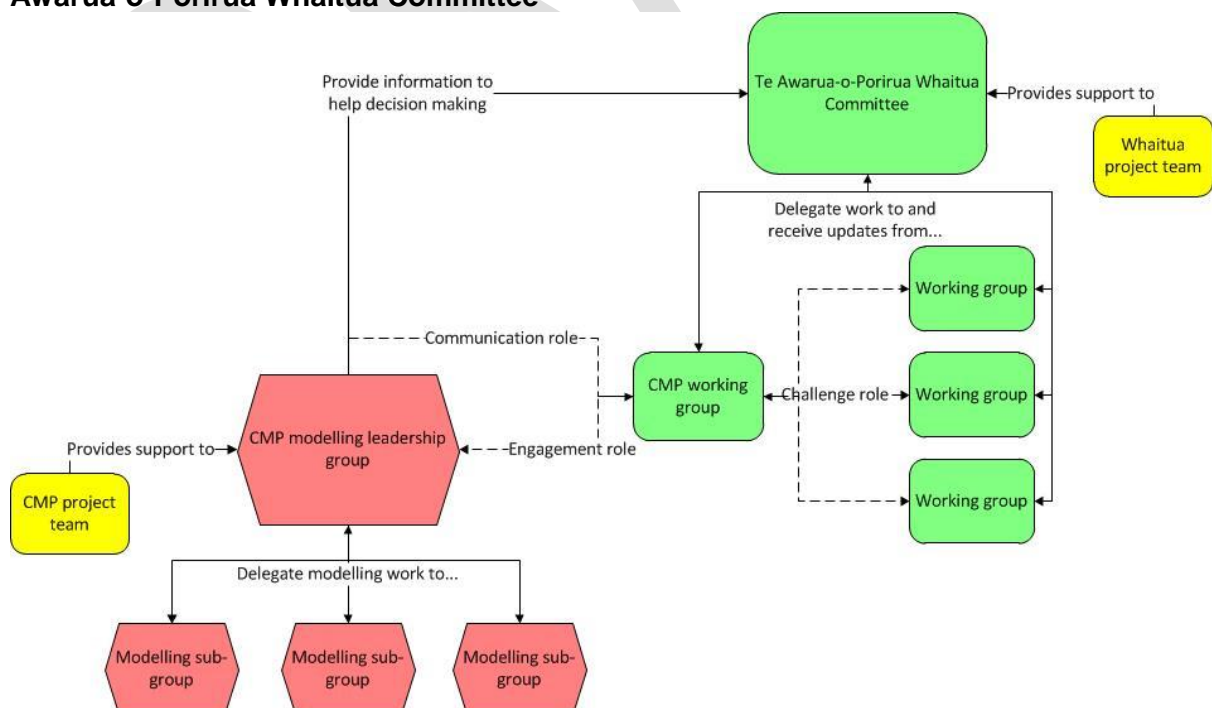
The purpose of the Collaborative Modelling Project (CMP) working group is to provide the link between the Committee and CMP modelling leadership group so that modelling and communication of results is focussed on the Committee's decision making needs.

The CMP working group's roles are:

- Engagement (MLG focus) –
  - Ensure that the requirements of the T AoPW committee and associated WG's are fully understood by the MLG and that modelling outputs support effective decision making in key areas
  - Point of contact for the MLG to discuss modelling approach to support respective WG's requirements
  - Test and provide feedback on the assumptions that modelling makes, and check how well the model will be able to provide the required information and respond to scenario questions.
- Challenge (Committee and other working group focus)
  - Screen and connect modelling information needs and scenario questions from the Committee and other working groups
  - Identify synergies, gaps and overlaps in information needs
  - Check and manage expectations on model capability and real word situations and needs (eg, push back on unrealistic/infeasible demands or push ahead where opportunities lie)
- Communication (Committee and community focus)
  - check that reporting from the modelling is understandable and uses language appropriate for real world audiences

Technical decision-making about how to deliver the Committee's requirements is the role of the modellers

### Linkages between the CMP working group and other groups associated with the Te Awarua-o-Porirua Whaitua Committee



## **Communication principles between the CMP Working Group and Modelling Leadership Group**

- Committee members within CMP working group will act as direct conduit between other respective WG's (of which all are represented) and MLG
- Communication between CMP WG and MLG shall be through either teleconference/videoconference at meetings, face to face representation by MLG at meetings or email (cc'd to all CMP WG members). All offline phone conversations or other shall be formalised in email
- Any requests for information/clarification from MLG to CMP WG shall be via email cc'd to all in WG

### **Current working group membership:**

TAoPW committee members

Stu Farrant  
Diane Strugnell  
Jennie Smeaton

John McKoy  
Warrick Lyon

TAoPW project team members

Sheryl Miller  
Brent King

Ben Fountain (Wellington Water)  
Keith Calder

## **Excerpt from the Modellers' Terms of Reference for the Collaborative Modelling Project**

### **Terms of reference for Te Awarua-o-Porirua Collaborative Modelling Project**

#### **Purpose**

The purpose of the project is to collaboratively generate information and knowledge to support the Te Awarua-o-Porirua Whaitua Committee make recommendations for land and water management in the Whaitua.

The project will produce modelling outputs and knowledge describing the current environmental, social, economic and cultural conditions in Te Awarua-o-Porirua Whaitua, as well as potential future outcomes that might result under management scenarios that the Te Awarua-o-Porirua Whaitua Committee develop.

Beyond the development phase, the models will support the ongoing implementation and evaluation of the Whaitua Implementation Plan (WIP) within/as part of the proposed Natural Resources Plan.

#### **Scope**

The scope of this project is to describe the current conditions and potential effects of management options on the environmental, social, economic and cultural outcomes in the Whaitua.

#### **Objectives and results**

Modelling information is relevant to and in time for Te Awarua-o-Porirua Whaitua Committee decision making

Modelling provides information about potential environmental, economic, social and cultural outcomes of management scenarios that the Te Awarua-o-Porirua Whaitua Committee develops.

Collaborative design and decision making reduces debate and contestability about the scientific decisions later in the planning process

Knowledge and modelling outputs support the ongoing implementation and evaluation of the Te Awarua-o-Porirua WIP

#### **Linkages**

The Te Awarua-o-Porirua Whaitua Committee is the client for this project. The scope and timeline of the project is defined by the Committee's requirements and timeline.

GWRC is funding the project and has responsibility for financial decisions relating to the project.

#### **Communication principles between the CMP Working Group and Modelling Leadership Group**

Committee members within CMP working group will act as direct conduit between other respective WG's (of which all are represented) and MLG

Communication between CMP WG and MLG shall be through either teleconference/videoconference at meetings, face to face representation by MLG at meetings or email (cc'd to all CMP WG members). All offline phone conversations or other shall be formalised in email

Any requests for information/clarification from MLG to CMP WG shall be via email cc'd to all in WG