

# GROYNES



**1 Rock groyne at Maple Lane**



**2 Rock groyne**



**3 Timber groyne (left bank near XS 370)**



ROCK LINING



**4 Rockline construction (Otaihanga)**



**5 Rockline extension (Otaihanga)**

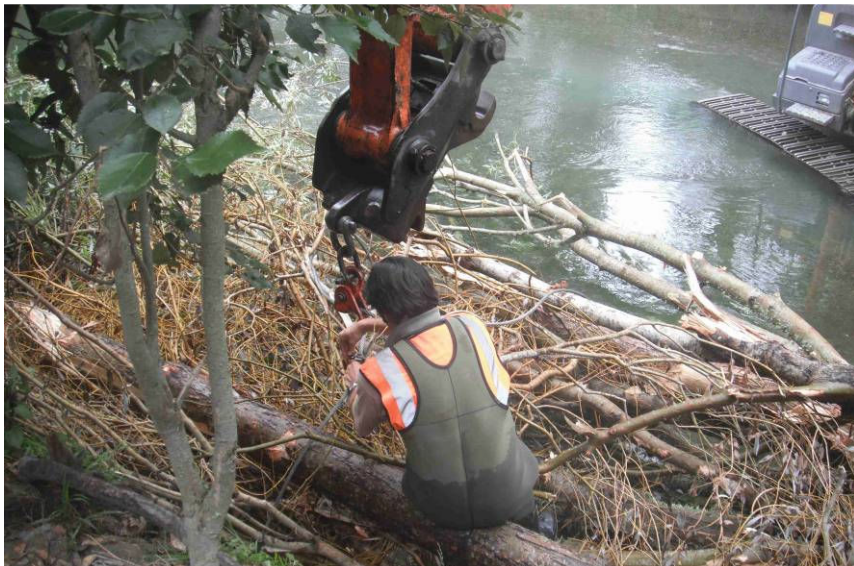
# WILLOW PLANTING/TETHERING/CABLING



**6 Planted willows**



**7 Tethering willows**



**8 Tethering willows**



## DEBRIS ARRESTER/ DEBRIS FENCE





## OTHER WORKS



**11 Mulching vegetation**



**12 Bed recontouring (Blakes corner XS 220)**



**13 Drain clearing – Waimeha Stream**



**14 Beach ripping (Hutt River)**

## RIVER MOUTH CUTTING



**15 Formation of bund to block mouth (Waimeha Stream)**



**16 Cutting channel downstream of bund (Waimeha)**



**17 New channel open (Waimeha Stream)**



RIVER MOUTH CUTTING



**18 Waikanae River – mouth cut December 2001**



**19 Waikanae River – mouth cut December 2001**