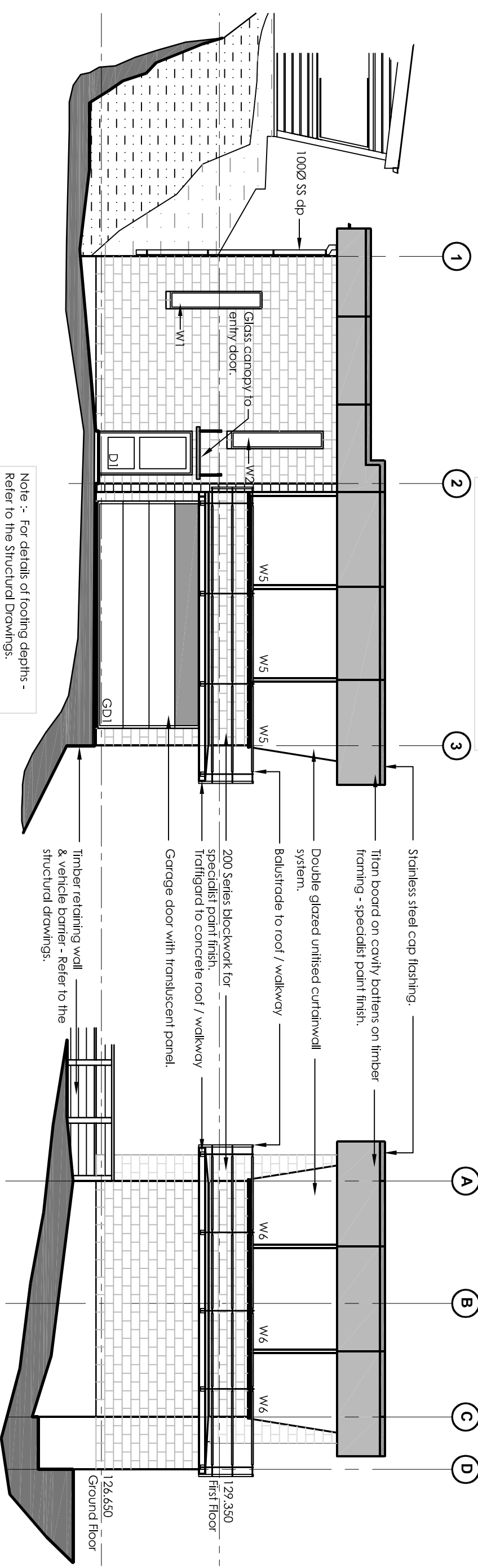


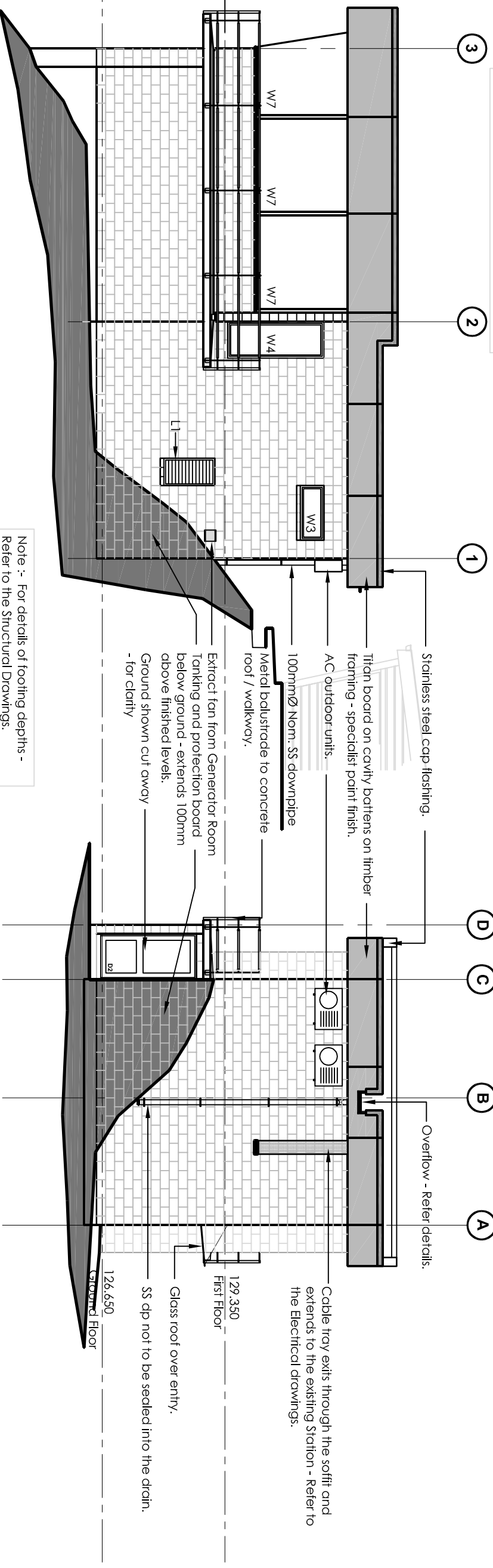
Note :- joints in ss parapet flashings generally line with joints in the Titan board, soffit lining and Observation window mullions / grids.



Issue

Note :- joints in ss parapet flashings generally line with joints in the Titan board, soffit lining and Observation window mullions / grids.

Note :- For details of footing depths - Refer to the Structural Drawings.



Note :- For details of footing depths - Refer to the Structural Drawings.

# SLADE ARCHITECTS LTD

Level 2, Fraser House  
160 Willis Street, Wellington  
PO Box 11 293  
Phone +64 4 385 6069  
Fax +64 4 385 8299  
architect@sladearchitects.co.nz  
www.sladearchitects.co.nz

**NEW SIGNAL STATION  
8 PARATU WAY  
BEACON HILL  
FOR THE WELLINGTON  
REGIONAL COUNCIL**

**CONSULTANTS**  
Spencer Holmes  
engineers • surveyors • planners  
Phone 472 2261  
Pacific Consultants  
Building Services Engineers  
Phone 916 8740

ELEVATIONS

**DRAFT**

Sheet	CS	Date	April 09
DWG No.	1203	Checked	AI - Rev
Scale	1:1000/9A3	Revision	

**4.00**