

Report 03.272  
Date 28 May 2003  
File ENV/17/02/01

Committee Environment Committee  
Author Chris Keenan, Pollution Control Officer

## Pollution control report for the period 8 April to 23 May 2003

### 1. Purpose

To report on incident response, investigation and audit work undertaken by Greater Wellington's Pollution Control Team during the reporting period.

### 2. Background

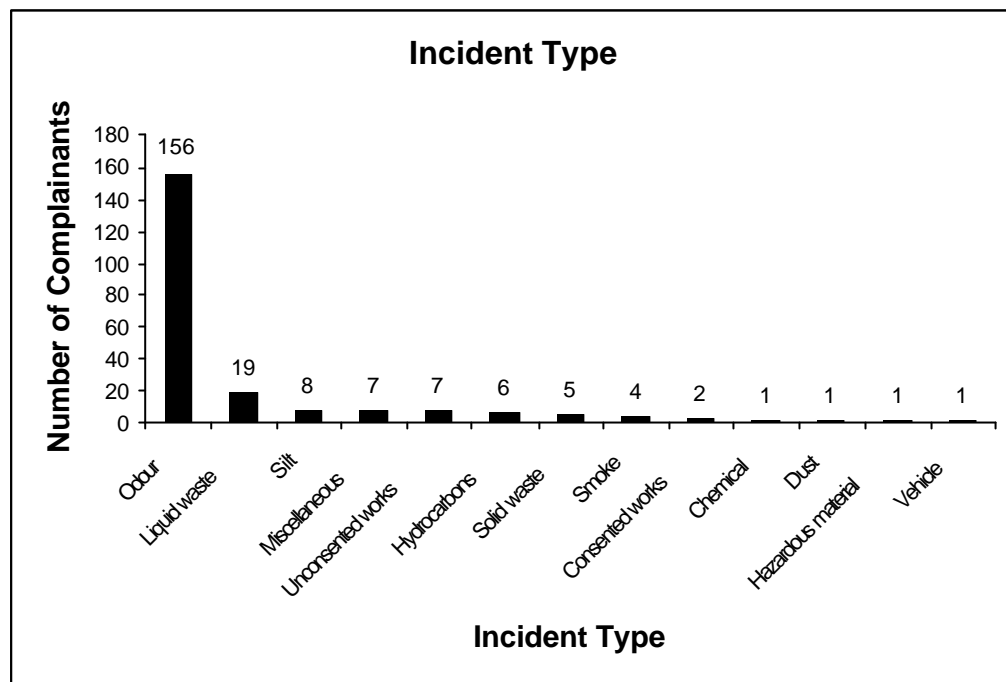
The Resource Investigations Department provides proactive and responsive services to combat environmental pollution in the Western Wellington Region. These pollution control initiatives are summarised below:

- **24-hour Incident Response**, which deals with pollution complaints, environmental incidents and alleged non-compliance with the regional plans.
- **Take Charge**, a pollution prevention programme, aimed at improving the environmental performance of small to medium sized industry.
- **Special Projects**, which include the development of resource materials, or targeted investigations to establish baseline conditions, track trends, characterise environmental problems, and define our priorities for future initiatives.
- **Selected Land Use Register**, a database of sites in the Region where hazardous activities/industries are known or suspected to have been present, and as a consequence have an increased chance of being contaminated. This database is maintained in accordance with proposed guidelines issued by the Ministry for the Environment (MfE).

### 3. Incidents

A total of 124 separate incidents were recorded in this time period. The types of incidents recorded during this reporting period are summarised in Figure 1. Further information can be found in Attachment 1.

Figure 1. Type of Incident Complaints



The majority of complaints were odour related, and attributed in the main to industrial sites in Wellington (a meat-works in Ngauranga Gorge and facilities at the Carey’s Gully complex). The most significant incidents that occurred during this period were:

- The Waiwhetu stream continued to have occasional discharges of a milky, white substance. Pollution Control Officers are working with Hutt City Council staff to stop this intermittent discharge. The originating stormwater network has been identified and the contaminant has been analysed.
- The Takapu Stream had one major discharge of a milky white substance. The contaminant was traced up the stormwater network to an industrial estate. Greater Wellington Pollution Control Officers are liaising with the suspected polluter.
- Repeated silt discharges are occurring from subdivisions throughout the Region. In most cases, the discharges were compliant.

The time between receiving an incoming complaint and reaching the source of the complaint (response time) is used as a performance indicator for the incident response service. Table 1 shows that the officers from both Consents Management and the Pollution Control Team achieved a high level of responsiveness during this reporting period.

Target response time	Average response time	Conformance level
Red (60 minutes)	40 minutes	84 %
Yellow (24 hours)	6 hours	100 %
Blue (30 days)	5 hours	100 %

#### 4. **Take Charge**

Approximately 60% of all service stations in the Region have had assessments now and feedback from participants continues to be positive. However, these visits have revealed a low level of understanding about the Resource Management Act 1991 and rules in the Regional Plans.

#### 5. **Special projects**

- Following recent rain, Water Shortage Directions have been rescinded in all areas for the current time. Officers monitoring the directions found a high level of compliance in the Kapiti area.
- The Pollution Control Team continues to drive the concept of a regionwide enforcement officer's network, to communicate regional and local issues of concern on a quarterly basis. It is hoped that this will allow for a more co-ordinated approach to pollution prevention in the Region.
- The first "pollution solution" pamphlet for stormwater is about to go to print. This advises households about how to prevent stormwater pollution. The brochure should be released in June.
- The first draft of the reviewed Response Manual for Sewage Discharges is almost complete.
- A project to characterise 'background' concentrations of common contaminants in soils across the Region is under way. Site selection is in progress and involves classifying regionally representative soil types.
- Advisory notices have now been issued to Pollution Control Officers and are expected to prove effective for minor non compliance issues.

#### 6. **Selected land use register**

The validation of the entries on the Selected Land Use Register has now been completed. The register is being consulted internally on a daily basis. It is being used regularly to provide site - specific information externally, especially for request by territorial authorities and prospective property buyers.

## 7. Enforcement action

The following is a summary of enforcement action taken by the Pollution Control Team during this reporting period.

### Infringement notices

- No new infringement notices have been issued during the period of this report.

### Abatement notices

- Mr Shamus Mill of Eastbourne, Lower Hutt was issued an abatement notice to obtain retrospective consents for the maintenance and management of a structure in a watercourse.
- Mike Blackburne of, Te Horo, Kapiti Coast was issued an abatement notice to remove equipment used to divert freshwater.
- Ken Jackson, Wainuiomata sought mediation to resolve issues about his abatement notice. The mediation process solved the key issues relevant to the abatement notice. These were concerning riverbank stabilisation and structure maintenance.

## 8. Communication

No further public communication is necessary for this report.

## 9. Recommendations

*It is recommended that the Committee:*

1. *receive the report; and*
2. *note the contents.*

Report prepared by:

Report approved by:

Report approved by:

**Chris Keenan**  
Pollution Control Officer

**John Sherriff**  
Manager,  
Resource Investigations

**Jane Bradbury**  
Divisional Manager,  
Environment

**Attachment 1:** Incident Response Summary