

Co-ordination Department Report

Geoff Skene, Manager

September 2002

1. Waiwhetu Stream (Tim Porteous)

The next phase of this project is about to commence. There are a number of steps that will be taken concurrently over the next six months. These steps are:

- to refine our knowledge of the extent of the contaminants (there is still some doubt about the number of tonnes of contaminated river sediment);
- to determine the level of risk posed to humans by the contaminated sediments being left where they are; and
- to make a study of the factors that would be relevant if the stream is to be moved (the Hutt Park option). This would be, in essence, a small pre-feasibility study, before a fuller investigation of this option.
- We are working to a timetable intended to enable us to respond to the “window of opportunity” created by the Hutt Park option. Information on the biological health and functioning of the stream ecosystem has already been determined. An ecological study of the stream has been completed by Dr Ian Boothroyd.

2. Pauatahanui Inlet (Tim Porteous)

The Pauatahanui Inlet Community Trust has had a very good response to its advertisement for new members. The Trust is currently interviewing the applicants.

3. Take Action (Jo Campbell; Richard Morgan; Jo Fagan; Eleanor Phillips; Susan Hutchinson-Daniel)

The third school term has commenced and with it another three schools are “taking action” for their local stream. These are Evans Bay Intermediate School, St Marks Church School, and St Pius X School. All three have now undertaken the early stages of the programme and have completed their field trips.

Staff produced a display on *Take Action* for Conservation Week.

We were delighted to see that one of the first schools to take part in *Take Action*, Paparangi School, received a special Conservation Award in August for the children's action project on the Seton-Nossiter Stream. The school organised a Stream Festival, made radio advertisements, put up signs and addressed the issue of dog waste in the area.

4. ***Take Care (Nigel Clarke et al.)***

Seven applications have been received for the Take Care fund. The applications are of a good quality and we expect to have finalised the selection process within a fortnight.

Around the Region, care groups are continuing with their work. Nigel prepared a display on their activities for the Conservation Week promotion in the Wellington Cathedral.

Resource Policy Department Report John Holmes - Acting Manager

August 2002

1. **Maintaining Regional Policies and Plans (Murray McLea and Nicola Shorten)**

Officer reports on the **Regional Plan** changes are progressing. We are currently thinking about a Hearing in November, subject to Hearing Committee availability.

On matters relating to the coastal environment and the **Regional Coastal Plan**, DoC has been informed of the Regional Council's decision to approve the Taputeranga Marine Reserve. In relation to aquaculture this is the subject of a separate report to the committee. Finally, Nic attended a workshop with DoC as part of the review of the New Zealand Coastal Policy Statement.

2. **Regional Plan Implementation**

2.1 **Silt Guidelines (Paul Denton)**

The Guidelines are the subject of a separate report to the Committee.

2.2 **Freshwater Ecosystems (Murray McLea)**

A new tool for consolidating the information gathered on fish over the last 2 years is being developed. Murray and staff have called it Point, Fish, Click. It uses a GIS format to provide information about where fish are present in rivers of the Region. The tool can be developed to inform people about relevant aspects of freshwater fish and river management. Further work on Point, Click, Fish will take place during the year.

About 80 staff from all parts of the Council attended two presentations that were held on freshwater fish in the Region, one in Wellington and one in Masterton. Feedback from staff is that they were interesting and well received.

2.3 **Marine biodiversity (Paul)**

There are three strands to this project, two of which are being headed by MfE and one through the Regional Council. Progress in the three areas is as follows:

- **Information Management (MfE):** Work is continuing with developing a metadata base for marine information (this phase is like providing a route map around what information exists, where, who to contact etc). The aim is to house the information in a website or a page within an existing government

website. The site will provide a search engine to enable users to find out where information is located. Other features may include a GIS system for locating spatial information from known data sets, e.g. bathymetry.

- **Community Participation (WRC):** With the assistance of a consultant, we are planning the next phase of community participation. It is anticipated this will consist of meetings with groups/societies, individuals, and possibly a series of talks at Te Papa on marine issues/information and production of a bimonthly newsletter.
- **Integrated Management (MfE):** A contract was let to PIP Consulting to finish the legislative review and make a preliminary assessment. The results from this work proved very useful and were done to a high standard. PIP Consulting will continue to work on this part of the project. MfE are the contract managers.

2.4 **Wetland Recovery Programme (Melanie Dixon)**

Copies of the draft Wetland Action Plan have now been sent to stakeholder groups including local councils, government departments and interested community and landowner groups. Face to face consultation on the draft Wetland Action Plan will happen over the next two months.

3. **Iwi matters (Keriana Wilcox)**

3.1 **Ara Tahī**

Ara Tahī met on 14th August. Items included the Incidents Summary, the Draft Wetland Action Plan, a report on the Council's re-branding, and a presentation by the Parliamentary Commissioner for the Environment, Morgan Williams.

4. **Reporting on the State of the Environment (Nicola Shorten)**

The main points of progress are as follows:

- The annual summary of environmental information is now on the Council web site.
- The process aimed at identifying where the monitoring of permitted activities should take place has begun.
- Work on setting up the plan monitoring process is underway.
- Nic met with Opus, the consultants who are working with the three Wairarapa authorities to develop a monitoring strategy (SMF project). She will be involved in this project providing a Regional Council perspective.
- Nic is working on guidelines for Resource Investigations staff to help with the development of 'report cards' to accompany their annual reports.

5. **Hazards (Rylee Pettersson)**

Rylee attended the Natural Hazards conference at Te Papa and presented a “Poster” paper on coastal hazards.

Over the next month, Rylee and Emergency Management staff will be meeting territorial authority staff as part of the “stakeholder needs analysis”. This work will help us focus on how the information we have on hazards can be effectively used by key stakeholders. Rylee and I will also be separately meeting staff at Kapiti Coast District Council to progress a project brief for more precise identification of fault traces in parts of the District. The project will be partly funded by the Regional Council.

6. **Statutory Resource Management work (Maree Sanders, John Holmes)**

This work is largely covered in a separate report to the Committee. Also, we have provided comments on the proposed development of the Aotea Block in Porirua. Comments covered transport, water supply, flood management and a range of environmental policy matters.

7. **Regional Sustainable Urban Development and Form Group (Maree Sanders)**

This group is comprised of representatives from all the territorial authorities in the western part of the Region, plus officers from the Regional Council (Maree and Dave Watson). The group has met once and will be looking at projects of regional significance, better information sharing, and raised awareness of what urban development issues are being faced by each authority.

Resource Investigations Department Report John Sherriff, Manager

September 2002

1. Resource Information

1.1 Flood Warning

The Resource Investigations Department provides a flood warning and monitoring service for the western part of the Wellington Region. Rainfall and river level recorders around the Region automatically relay information to the Regional Council Centre. When specified rainfall intensities or river levels are reached the system automatically alerts staff who implement response procedures.

Since the last meeting of the Committee the following alarms were received and responded to:

14/7/02	Rainfall: Orongorongo Swamp, Wainui Reservoir
15/7/02	Rainfall : McIntosh River level : Birchville, Mangaroa

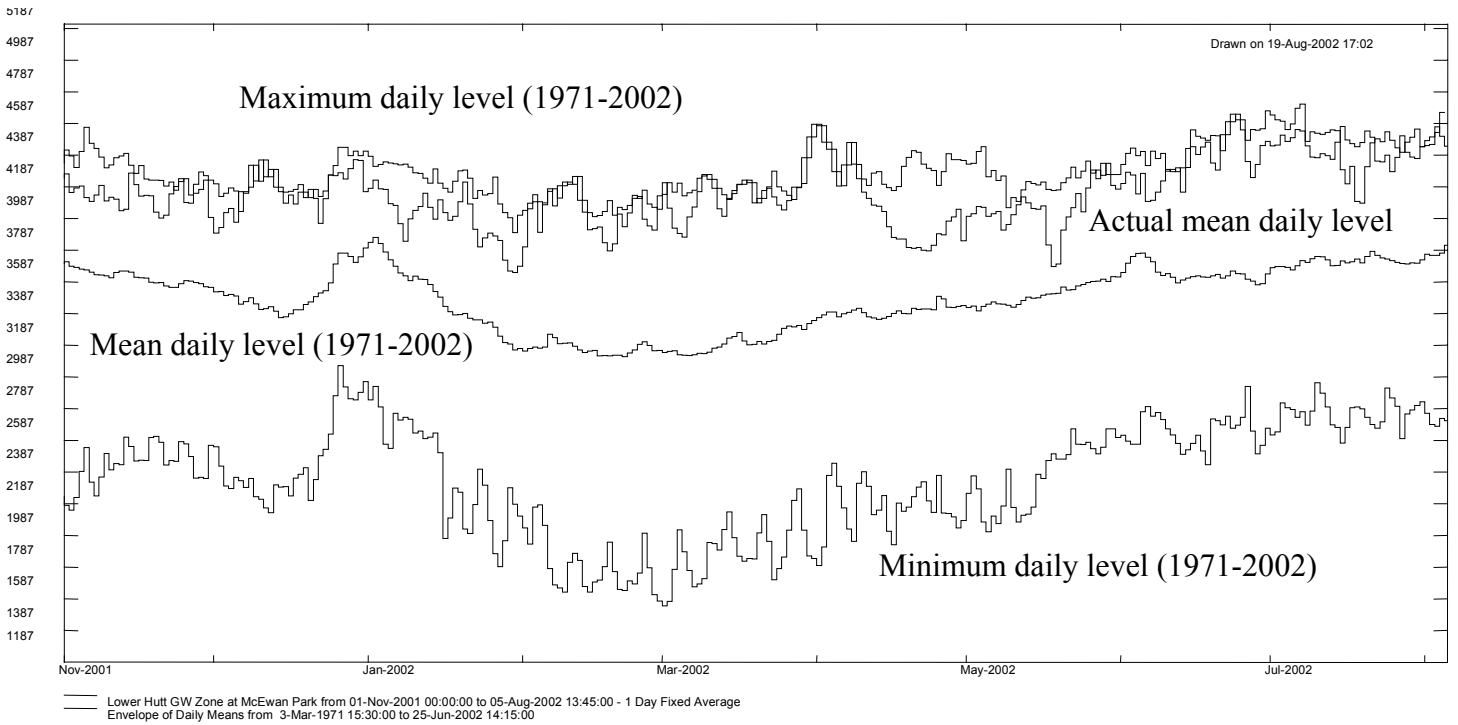
2. Resource Analysis

2.1 Groundwater Levels

The Department monitors groundwater levels at 46 sites around the western Region. We use two of these bores, McEwan Park at Petone and Hautere Plain on the Kapiti Coast, as general indicators of the state of groundwater resources in these areas.

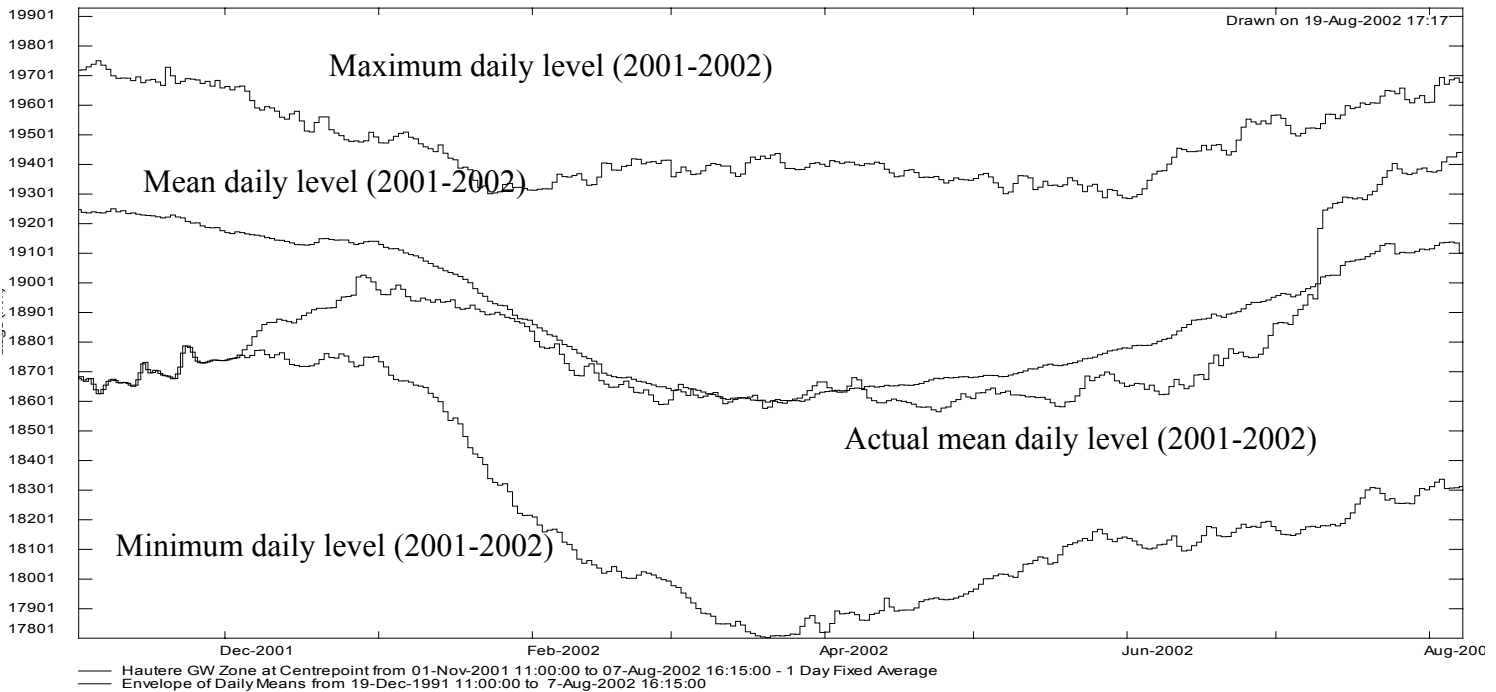
The following graphs show a comparison between water levels recorded this year and historical summary data for the McEwan Park and Hautere Plains sites.

Lower Hutt Groundwater Zone – Upper Waiwhetu Artesian Aquifer



The artesian pressure measured at the McEwan Park monitoring bore is still well above the long-term mean and close to the long term maximum.

Kapiti Coast

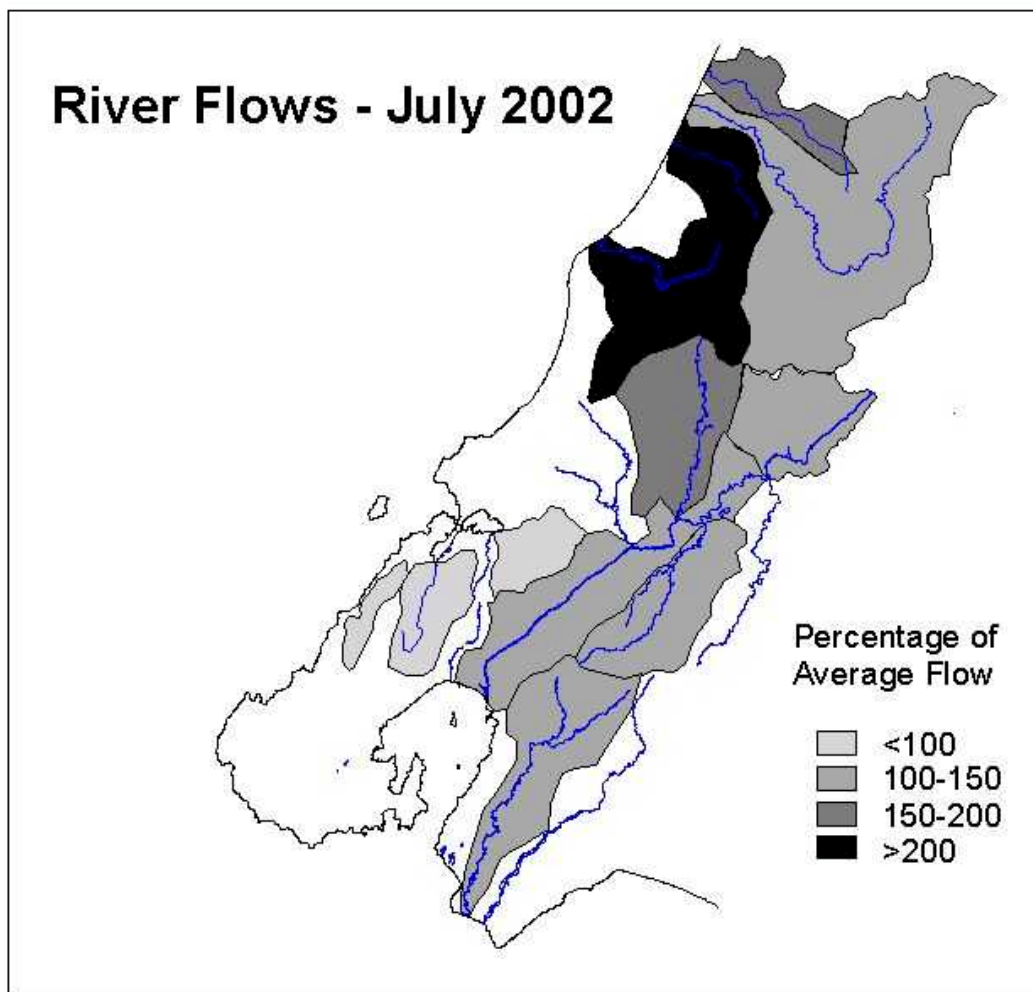


Kapiti groundwater levels have risen above the long-term mean values for this period.

2.2 Rainfall and River Flows

Rainfall totals for July varied across the Region. The north-west of the Region received higher than average rainfall with the Tararua Ranges and the Kapiti Coast receiving monthly totals of up to 150% of normal. In and around Wellington and the Hutt Valley 60% to 100% of normal August totals were received.

All rivers draining the ranges had well above average flows. In particular the Waikanae River and Mangaone Stream were 260% to 350% above normal respectively. Streams around Wellington, Makara and Pauatahanui had slightly below average flows.



River flows as a percentage of normal for July 2002.

2.3 Air Quality Monitoring

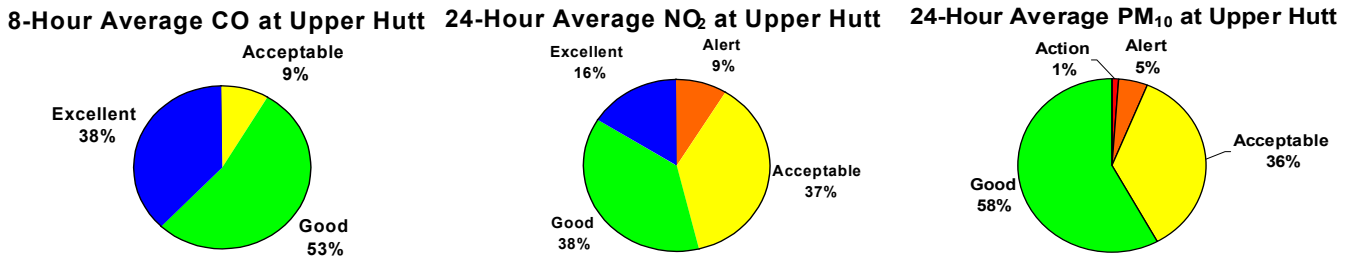
2.3.1 *Ambient Air Quality Monitoring*

We currently monitor ambient air quality at two sites in Lower Hutt (Birch Street Reserve) and Upper Hutt (Trentham Fire Station).

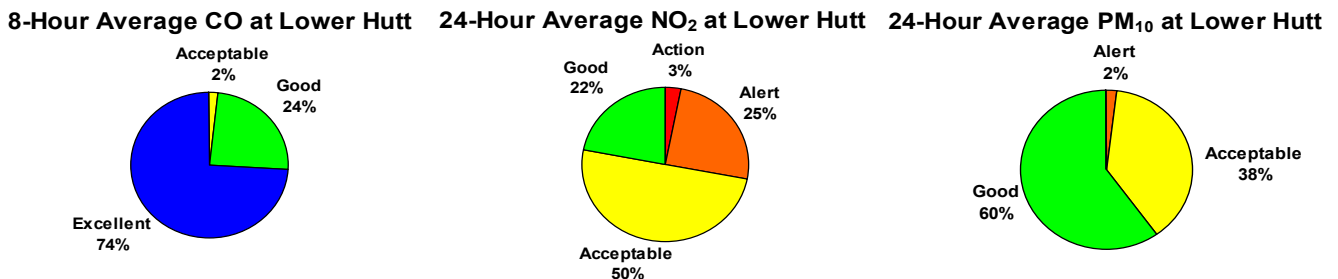
The graphs below represent air quality at the location indicated when the monitoring results are compared to ambient air quality guidelines. The assessment categories are as follows:

Category	Maximum Value	Measured	Comment
Action	Exceeds Guideline		Completely unacceptable by national and international standards.
Alert	Between 66% and 100% of the guideline		A warning level which can lead to guidelines being exceeded if trends are not curbed.
Acceptable	Between 33% and 66% of the guideline		A broad category, where maximum values might be of concern in some sensitive locations, but are generally at a level that does not warrant dramatic action.
Good	Between 10% and 33% of the guideline		Peak measurements in this range are unlikely to affect air quality.
Excellent	Less than 10% of the guideline		Of little concern.

Results for the Past Six Weeks at Upper Hutt



Results for the Past Six Weeks at Lower Hutt



3. Resource Quality

Our Resource Quality team provides a pollution response service to the western Region. They are also involved in monitoring compliance for non-consented activities, and waste management and contaminated sites issues.

3.1 Pollution and Non-compliance Complaints

A summary of pollution complaints, our performance enforcement action taken is reported separately.

Attachment 1 to Report 02.548
Page 11 of 24

3.2 Unwanted Agrichemical Collection

Collection of unwanted agricultural chemicals was completed in the Wairarapa during July. The following table summarises collections made this financial year.

Collections completed	33	
Total chemical collected	857.7kg	25.99 kg per property
Quantity needing to be exported for disposal	355.8kg	41.5%
Quantity able to be disposed of locally	288.8kg	33.7%
Quantity able to be re-issued	213.1kg	24.8%

We have so far received 97 registrations from the western Region.

3.3 Enforcement Action

On July 26 we started proceedings to prosecute Allied Concrete Ltd. for an unauthorised discharge of concrete waste water from their site in Landfill Road in February this year.

4. Staff

Stuart Powell one of our Resource Technicians has resigned and left the Council on 23 August 2002 to set up his own consulting company.

Andrew Jones was a member of the New Zealand Underwater Hockey team which recently came second in the World Championships in Calgary.

Consents Management Department Report Paula Hammond, Manager

September 2002

1. Consent Statistics

During the period to 1 July 2002 to 16 August 2002 we received 36 consents. This compares with 44 consents received for the same period last year.

The Department has participated in a number of surveys and audits in July and August. The results of the surveys and how we compare to other councils should be available later in the year.

A summary of the notified consents we are currently processing is attached.

2. Appeals

We are still waiting to hear from all the State Highway appellants as to whether they are continuing to proceed with appeals against WRC consents.

Mediation for the Sink F69 was held on July 2002. As a result of the mediation, additional conditions have been drafted and are likely to be signed off by consent order in the near future.

3. Compliance

3.1 General

It is pleasing to see that the percentage of consent holders that are in full compliance with consent conditions has increased compared to last year's levels. There is a separate report to this Committee summarising the Region's compliance results.

3.2 Abatement Notices

We have issued five abatement notices since the last committee meeting.

All five notices have been issued in conjunction with unlawful connections from boatsheds to the sewer that resulted in unconsented works in the coastal marine area. While connection to the sewer is something we want to encourage, significant reclamation of the coastal marine area has occurred without consent.

The two abatement notices we reported to the last committee meeting are being complied with.

3.3 **Infringement Notices**

We have issued two infringement notices since the last committee meeting.

The first notice was issued to New Zealand Fish Products Limited for an offensive odour beyond the boundary.

The second notice was issued to United Environmental Limited for a discharge of lime dust that was offensive beyond the boundary.

3.4 **Prosecution and Enforcement Orders**

As verbally reported to the last committee meeting, we successfully prosecuted Hayes Earthmoving Services for an unlawful discharge of sediment to Taupo Swamp. While the effects of the discharge were not significant, the judge commented that the incident was a careless and thoughtless act and that any experienced operator would have realised the consequence of his action.

4. **Other**

I regret to inform the Committee that Craig Calland has resigned. I wish Craig all the best with his new position at the Hutt City Council.

Notified Resource Consents in Progress

Applicant	Proposal	Date Consent Lodged	Date Submissions Closed	Number of Submissions Received	Pre-hearing Held	Hearing Held	Hearing Committee Members	Date Decision Released	Granted or Declined
New Zealand Galvanising	Discharge to air for contaminants from a hot dip galvanising process and associated activities.	24/07/00	29/08/00	4	08/09/00	Application on hold to allow for monitoring results to be discussed with applicant and submitters.			
Transit ¹	Consents associated with the construction of an interchange at the intersection of State Highway 2 and 58.	07/11/00	19/01/01	99	N/A	27/06/01 – 16/07/01 Reconvened on 01/08/01-02/08/01 and 27/08/01	Commissioners Helen Tobin, Russell Howie and Richard Fowler	12/10/01	Granted – one appeal received
Transit ¹	Consents associated with the realignment of State Highway 58.	07/11/00	19/01/01	99		27/06/01 – 16/07/01 Reconvened on 01/08/01-02/08/01 and 27/08/01	Commissioners Helen Tobin, Russell Howie and Richard Fowler	12/10/01	Granted – one appeal received
Wellington City Council	Change of consent monitoring conditions for the Moa Point Pump Station.	02/11/00	08/12/00	2		On hold for further information in relation to monitoring requirements.			
Wellington City Council	Renewal of discharge of milliscreened effluent to the coast during wet weather events, Western Wastewater Treatment Plant.	20/12/00	05/03/01	9	17/05/01	8/10/01 9/10/01	Ian Buchanan Ian Stewart	26/10/01	Granted, one appeal – mediation held 27 June
Transit ²	Upgrade of State Highway 2 from Dowse Drive to Petone.	30/03/01	29/05/01	100+		1/10/01 – 9/10/01	Helen Tobin, Richard Fowler, Barry Butcher		Granted – three appeals received

Applicant	Proposal	Date Consent Lodged	Date Submissions Closed	Number of Submissions Received	Pre-hearing Held	Hearing Held	Hearing Committee Members	Date Decision Released	Granted or Declined
Transit ³	Ventnor Drive Interchange.	31/7/01	11/06/02	Apx. 3 on regional issues	N/A	02/08/02	Irvine Yardley, Liz Mellish	Due to be released by 23/08/02	
Steamship Wharf Limited ⁴	Relocation of Greta Point Tavern to Queens Wharf.	11/07/02	22/08/02						
BP Oil NZ Ltd	To change the use of an existing pipeline by resting it on petroleum product instead of seawater between shipments.	20/7/01	16/10/01	17		Application on hold at request of applicant to assess further development options.			
Sink F69 Charitable Trust	To create an artificial reef by sinking the former HMNZS Wellington.	3/10/01	3/12/01	72		25/02/2002 and reconvened 6/3/02	Ian Buchanan, Miria Pomare, Irvine Yardley	27/3/02	Granted, two appeals received Mediation held 30/07/02
Wellington Regional Council – Flood Protection	To extract gravel from the Waikanae River for flood protection purposes.	04/12/01	08/02/01	11		14/08/02	Christine Foster and Aka Arthur		
Wellington Regional Council – Flood Protection	Hutt River Ava-Ewen realignment river works.	18/03/02	29/04/02	4		4 June 2002	Christine Foster and Aka Arthur	24/6/02	
Nuplex Environmental	Discharge to air from operation of a liquid and hazardous waste processing plant.	15/4/02	28/5/02	18		Hearing scheduled for 10/09/02			

- 1 These applications will be heard jointly with Hutt City Council, Porirua City Council and Upper Hutt City Council
- 2 These applications will be heard jointly with Hutt City Council
- 3 These applications will be heard jointly with the Kapiti Coast District Council
- 4 These applications will be heard jointly with the Wellington City Council

Harbours Department Report Mike Pryce, Manager

August 2002

1. Harbour Navigation Aids

All navigation aids are operating satisfactorily. A minor fault with the “sun switch” on Falcon Shoal pile light on 27 July was quickly repaired.

2. Oil Pollution Response

- Three reports of oil on the water were investigated; one minor spill required the application of a small quantity of dispersant.
- A WRC staff member went to Te Atatu, Auckland for a Maritime Safety Authority “Fundamentals” training course in oil spill response.
- The Maritime Safety Authority approved the Departments’ 2002/2003 Marine Oil Spill Preparedness and Response budget on 8th August.
- In mid-August the Department was requested by Horizons.MW (the Manawatu Wanganui Regional Council) to provide Regional On Scene Commander-coverage for this Tier 2 regional coastline marine oil pollution response. This was because Horizons.MW’s current Regional On Scene Commander recently left the Council’s employment and the Council required temporary coverage (for over six months). Subject to a satisfactory Memorandum of Understanding, we should be able to help. The Council’s equipment is stored about five miles Southeast of Palmerston North. The regional coastline stretches from south of Levin to Northwest of Wanganui on the west coast, and from above Cape Turnagain to south of Owhanga on the east coast

3. Departmental Activities

Between 21 - 22 July 2002, the Manager, Harbours, was at Westport to review the Westport Hydrographic System. He then travelled to Port Taranaki on the cement ship *Milburn Carrier II* to do a follow-up report on the operation of the Taranaki Dynamic Under Keel Clearance system.

On 27 July Harbours staff attended and assisted with the demonstration of a rapid-deployment harbour oil boom in Evans Bay.

On 29 July Harbours staff attended the debrief on the *Kent* incident.

On 30 July 2002, the Manager, Harbours and Deputy attended a workshop concerning Cook Strait Dangerous/Hazardous Goods and the proposed draft rule Maritime Rule Part 24A with the Maritime Safety Authority.

On 8 August 2002, the Deputy Harbourmaster attended the Paremata Bridge partnering meeting held at the offices of Beca Carter Ltd. This was to ensure that the navigation and safety aspects of the project were adequately covered.

On 13 August 2002, Harbours staff, port pilots and Emergency Services viewed the Special Operations room at Police Headquarters.

General

The ro/ro freighter *Kent*, that totally flooded her engine room and narrowly escaped sinking in the harbour on the night of 14 July, has been undergoing major engine refurbishment whilst lying at Inter Island Wharf, adjacent to The Lynx downtown terminal. It is presently anticipated that *Kent* will resume commercial service in mid-September 2002.

The rail ferry *Arahura* was away in Auckland for a major refit between 17 July and 21 August 2002, making it a quiet time for Cook Strait ferries.

Emergency Management Department Report

Rian Van Schalkwyk, Manager

September 2002

1. Project Phoenix

Project Phoenix, (and in particular the exercise), was a huge challenge and despite the heavy workload, turned out very well.

1.1 Background

The exercise objectives were:

- To test a framework for one region to support another in a major emergency
- To exercise the response plans of participating agencies
- To identify deficiencies and areas where extra planning is required

The exercise, based on a major earthquake striking Wellington, involved about 200 civil defence, emergency services and national organisations that supply lifeline services in Wellington and Auckland. Everyone worked together in a week of headquarters activation, workshops, tabletop exercises, briefings, public demonstrations and practical rescue exercises.

The scenario of the exercise resulted in the following impacts in the Region:

- over 500 fatalities
- 3,800 injured people requiring medical treatment
- 18,000 buildings damaged
- 50,000 people displaced from homes
- 150,000 insurance claims (it will take three years to process 90% of these claims)

1.2 Organisations involved

We liaised with officers from the following organisations to “flesh out” exercise inputs, sequences of events, communications, etc:

- New Zealand Defence Force
- The Ministry of Civil Defence Emergency Management
- Ministry of Health
- Senior Police and Fire
- Chief Executive of the Trentham Racecourse
- Civil Aviation Authority
- Transit New Zealand
- Lifelines utilities
- Price Waterhouse Coopers
- Auckland CDEMG

- Urban Search and Rescue
- Communication providers
- Emergency Services Co-ordinating Committees
- TLA's in our region

1.3 **Activities**

Council volunteer staff were trained on the 16th of July to ensure that they all were familiar with such things as, for example, the Standard Operating Procedures.

The Media launch took place on the 18th, which resulted in good regional media coverage for the exercise.

The exercise took place on Tuesday 23 July and the Council volunteer staff (and Councillor Yardley) did a great job. In a broad sense, we achieved what we had in mind for the Emergency Operations Centre. More training is planned for staff to make the whole process run even more efficiently.

The exercise continued with workshops on medical issues, emergency water supply and roading access that were held on Wednesday, 24 July.

These workshops have resulted in several projects to address critical issues, such as roading access (this will eventually become a transportation project), emergency water, communications, reconnaissance, public information and air support. All these projects will eventually culminate in an "Operations Plan" for the region (which will also form the operational basis for the CDEM Plan).

On Friday 26 and Saturday 27 July we facilitated the Urban Search and Rescue part of the exercise. We arranged for a "Search & Rescue" day at the overseas terminal and Chaffers Park, which was attended by more than 100 search and rescue volunteers, the National USAR team, emergency services and the media. All these specialist services and volunteer groups worked together in creating a more resilient search and rescue capability for our region.

1.4 **Debrief**

The debriefings for the exercise took place as follows:

- Friday, 26 July – Council Volunteer staff
- Monday 29 July am – National debrief facilitated by the Ministry of Civil Defence Emergency Management
- Monday 29 July pm – regional debrief facilitated by the Regional Controller. Issues such as fact finding, reconnaissance, communications, the "Big Picture", managing information flow, public information, incident management teams, general rescue and the contacts of people we need to talk to stemmed from the debrief. All of these are in the process of being addressed.

1.5 **Lessons learned from the exercise:**

- Search & Rescue – external assistance will be needed, but it will be too late, especially for the first 24 to 36 hours. A local capability is much needed.
- Treatment and movement of the injured – will be very difficult to move people out of the region. We'll have to keep and treat them here.
- Water – The loss of water supply (local and regional) will have a major physical, psychological and social impact on the community. Also severe consequences for fire fighting, business and industry.

- Roading access – Wellington’s cities and districts will geographically be isolated. Access is critical to address the above needs.
- Communications – also includes emergency communications. Vital to have communications up and running as soon as possible. Need to communicate on a national basis (voice and data).
- Business/Service Continuance Planning – business and industry to be made aware of consequences – need to be prepared to survive such a major event.
- Reconnaissance – vital to have a regional reconnaissance plan in place – will save time in executing critical functions of S&R, treatment of the injured, water provision, clearing of priority routes, etc.
- Public information and warnings – very important to keep the public up to date of what’s happening, what they need to do, what they need to have, where they need to go for help, etc.
- Critical resources supply – the management of supply (human resources, material, equipment, fuel), stakeholders and other role-players like NZDF, etc.
- Working together – It will be very difficult for anyone to try and manage an event like this on their own. We need to plan work and together to have the operational capability in managing this kind of disaster. The CDEMG will be the ideal tool/platform to achieve this.
- Other – critical needs such as welfare, restoration of lifelines, health and sanitation also require thorough thought and attention – continuation of Project Phoenix to address these needs.

1.6 **Desired Outcomes**

From the lessons learnt it will be necessary to investigate the following:

- Water supply (already established – awaiting first report)
- Regional reconnaissance and road access (established on 22 August 2002)
- Communications (project already running on a national basis)
- Information flow formats
- Local rescue capability
- Logistics supply chain
- Service continuity for emergency responders (survey in this regard under way)

2. **Other activities**

The Fifth Natural Hazards Conference took place at Te Papa from 13-16 August. The Wellington Regional Council was one of the major sponsors for this event. The Council’s Chairperson officially opened the Conference. As members of the Conference Planning Group, the Manager, Emergency Management and the Emergency Management Officer attended several meetings in this regard.

As a member of the National Public Education Working Group representing the Wellington Region and the Manawatu/Wanganui Region, the Manager, Emergency Management attended a workshop in the Wairarapa on 30/31 July. A lot of good work was done on school education, radio campaigns, public education databases, and a five-year national public education strategy. The idea is to get our communities more

aware and prepared and the first phase of the strategy will concentrate on schools, communities and business organisations.

Attended a meeting with the Chairperson and Lifeflight Trust/Westpac Trust officers regarding their new headquarters at the Wellington Airport. The main aim was to get financial support from the WRC and the Chairperson advised them to prepare a business plan/proposal for the Council.

Several meetings of the Emergency Services Co-ordinating Committees (Kapiti and Hutt Valley) and Emergency Managers of the Region were attended. A positive outcome from all of these meetings is that everyone is taking the lessons learnt from Exercise Phoenix to heart. There is total buy-in for the continuation of Phoenix, which will eventually lead to a more resilient New Zealand. Other regions around the country have also expressed their interest to join the project. It is our intention to have a National Phoenix exercise in the second half of next year.

3. Environment

3.1 Earthquake reports

Since the last Environment Committee meeting 13 reports for earthquakes bigger than 3 on the Richter Scale were received from IGNS. Of these only the following earthquakes were felt in the Wellington Region:

2002 Aug 07 09:43 **Mag.:** 4.4 **Depth:** 25 km *Within 5 km of Greytown*

2002 Aug 03 21:28 **Mag.:** 4.0 **Depth:** 30 km *10 km north-west of Porirua*

3.2 Special Weather Bulletins

Since the Committee's last meeting that was held on 25 July, five Special Weather Bulletins (2 for heavy rain and 3 for strong wind) were received. All parties involved were notified and no problems were experienced.

3.3 Communications

Weekly tests of the communications network are still being carried out. The system is functioning well and no problems have been experienced.

Richard Waddy, Divisional Accountant**Financial Position: 30 June 2002****1. Operating Results**

We are pleased to report the interim operating results for the year ended 30 June 2002. These numbers are provisional and subject to audit confirmation.

<u>Environment Division</u>				
<u>Summary Income Statement</u>				
<u>For the Year Ended 30 June 2002</u>				
	<u>Actual</u>	<u>Year to Date</u>	<u>Variance</u>	<u>Full Year</u>
	<u>\$000s</u>	<u>Budget</u>	<u>\$000s</u>	<u>Budget</u>
	<u>\$000s</u>	<u>\$000s</u>	<u>\$000s</u>	<u>\$000s</u>
Rates	6,842.5	6,842.5	--	6,842.5
Other Revenue	2,219.3	1,894.2	325.1 F	1,894.2
Total Revenue	9,061.8	8,736.7	325.1	8,736.7
			F	
Less:				
Direct Expenditure	8,054.1	8,068.9	14.8 F	8,068.9
Indirect Expenditure	866.8	949.6	82.8 F	949.6
Total Operating Expenditure	8,920.9	9,018.5	97.6 F	9,018.5
Operating Surplus (Deficit)	140.9	(281.8)	422.7	(281.8)
			F	

2. Surplus

We are pleased to report a healthy financial result for the year. For the year an operating surplus of \$141,000 was posted which is significantly above our budgets for the corresponding period. The budgets provide for a deficit of \$282,000.

The result translates to a net favourable variance \$423,000, comprising increased revenue of \$325,000, and reduced expenditure \$98,000.

3. Revenue

Total Revenue at \$9,062,000 was \$325,000 above our budget target of \$8,737,000.

The increased revenue is the result of some large notified resource consent applications. These were:

- the Otaki Pipeline Project (\$67,000);
- the upgrade of SH58 and SH2/58 (charges recovered this year - \$90,000);
- the Oriental Bay Beach Enhancement Project (\$38,000);
- Exide's air discharge for their lead battery recycling business (\$16,000);
- SH2 from Te Marua to Kaitoke realignment works (\$18,000); and
- the Western Wastewater Treatment Plant overflows (\$14,000).

Recently, we received additional funding from the Porirua City Council (\$10,000) and Wellington City Council (\$6,500) for the stormwater project and the Hutt City Council made a contribution (\$20,000) towards the Waiwhetu Stream investigation. These revenue items were not anticipated at the time the budgets were constructed.

Furthermore, this year the annual resource management charges raised revenues - in total, \$225,000 (budget - \$198,000). The increase is mainly a result of the new charging policy that incorporates a higher staff chargeout rate.

4. Total Expenditure

The Division's total expenditure, at \$8,921,000, came in close to our budgets – only some \$98,000 (or 1.1 %) under budget.

The main reasons for this variance are:

- Personnel costs were under budget by \$22,000. Staff movements in the period caused the under-spend.
- Material costs were slightly over budget by \$109,000. Commissioner's' costs that arose from the Otaki Pipeline, the upgrade of SH58 and SH2/58, and the Oriental Bay Beach Enhancement Project hearings make up most of this variance. These costs are fully recoverable from the applicant.

In addition, the GIS system upgrade resulted in a shortfall of \$27,000 (over and above the fees agreed to with GIS users at the time the budgets were completed). Subsequently, our GIS customers agreed to fund that shortfall and a charge was levied in June 2002.

- External Contractors and Consultants were \$203,000 under budget for the period. The shortfall is with the collection of unwanted agricultural chemical (\$20,000), remedial work at some of our contaminated sites (\$76,000) and the stormwater investigation work (\$67,000). However, some of the contaminated sites budget under-spend on consultants has been offset by engineering work (\$13,000) that

was undertaken internally and extra staff time (\$32,000). Overall that project was \$31,000 underspent.

- Some of the stormwater budget has been carried over, as an insurance measure, because weather conditions prevented samples being collected. Similarly, the painting of the Front Lead Light has been postponed (\$45,000), because of the poor summer weather, with funding carried over until the next financial year.

We are pleased to report that the spending gap for Iwi projects has been narrowed, with the spend only some \$5,000 behind our budgets.

- The Bad Debts and Provision for Doubtful debts has been adjusted to show a favourable contribution of \$18,000. The charge made to the owners, Carp Investments Limited
- (\$32,000), for the disposal of the hulk, Sarfaq has been reversed. Because that company was insolvent at the time it was placed in receivership there was no opportunity to collect the amount owed to us. The receiver reported that there were no surplus funds available to any unsecured creditor whatsoever.

4. **Capital Expenditure**

The capital expenditure programme was some \$70,000 short of our budget expectations at the close of the period. The shortfall is with work on the Ecobus, which although almost complete, has been suspended. The final fit-out – paint work/branding remains outstanding. To accommodate this work, \$50,000 of capital expenditure has been carried over.

To some extent that shortfall was offset by the purchase of a further three vehicles (total cost - \$18,500). These vehicles were surplus to the Water Group's needs and used by the Environment Division over the summer months. Our budgets provided for a short-term lease for two of these vehicles, whilst the other was unbudgeted. These vehicles have either been returned to the lessor or sold.